



*The Pathway Post*  
Contact:  
Jane Moore  
[jcmoore@magma.ca](mailto:jcmoore@magma.ca)

1217 Maitland Ave.,  
Ottawa, K2C 2C4



# The Pathway Post

## INSIDE THIS ISSUE

Welcome	1
The Pathway: Map	1
The Pathway: What, Why, How	2
The Sad News: Bill Royds	3
The Good News	3
A Concert for Bill	4
The Pub Concert	4
No. 19 by Ben Glossop	5
What You Can Do	5

## WHAT'S NEW

- \* The new website is coming soon!
- \* Two exciting concerts!
- \* Carleton University's English Department supports the Pathway.

## Welcome

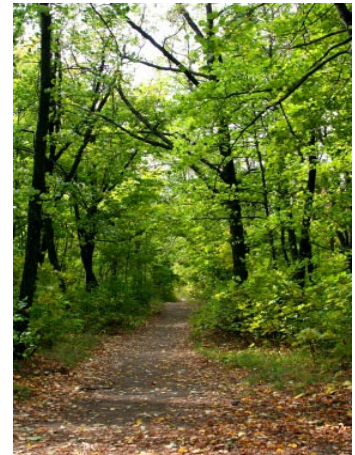
By J. Moore

Hello! Welcome to the first edition of our newsletter, **The Pathway Post**. We plan to send the newsletter to the members of the Poets' Pathway every three months, or more often when there is a need.

We will tell you what we are doing as we work to make the pathway a reality, ask you for help or for your opinions, tell you about our latest activities, and provide you with a way to reach us.

There is some very sad news this month, and some happy news too. Welcome to the green world of the Pathway!

## McCarthy Woods



*Into the stilly woods I go,  
Where the shades are deep and the wind-  
flowers blow,  
And the hours are dreamy and lone and  
long,  
And the power of silence is greater than  
song.*

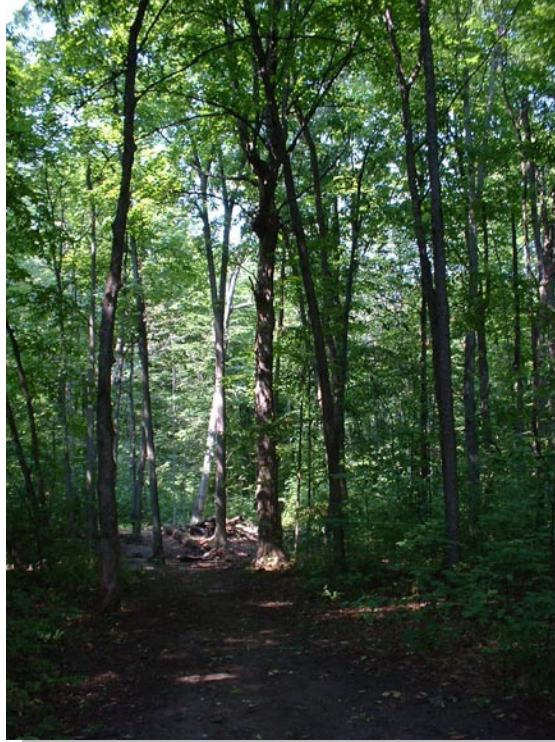
By W.W. Campbell

## The Pathway



## What the Pathway is all about: What, Why, How

*Ottawa has  
always been a  
City of Poets*



**Poets' Pathway  
Committee:**

**Ben Glossop**

**Jane Moore**

**George Wilson**

**Chris Woodward**

The Poets' Pathway is a walking and biking trail of approximately 35 kilometres, much of it on already-existing walking paths through Ottawa.

It runs from Britannia Beach, south along Pinecrest Creek, east along Nepean Creek ; it crosses the Rideau River, moves north to the Ottawa River, and ends in Beechwood Cemetery where the poets lie.

The purpose of the Pathway is two-fold: it will help preserve greenspace in the nation's capital; it will commemorate Canada's poets, particularly

Canada's first famous poets, the Confederation Poets and the poets of the Mouvement littéraire. There is presently no monument at all to these poets. The Confederation Poets are the literary equivalent of the Group of Seven, celebrating the new country of Canada in its own awesome and difficult beauty. They are poets OF THE LAND. The path will be a living memorial to the land, the very land that inspired them.

How will we do it? We will have some of the poets' most well-known poems about Ottawa engraved on plaques and placed

along the trail.

There will be phone numbers along the trail; if you dial the number you will hear a Canadian poem read by a prominent Canadian. The poems will also be available, as we gather them, on our website.

We will add geographic and botanical information about our land and its flora and fauna. We plan many activities to celebrate Ottawa's land, the poets, and their work.

Check out the Pathway and its history on [www.poetspathway.ca](http://www.poetspathway.ca)

**Memorial Service for  
William Royds:**

**April 24, 1:30pm.**

**The Sacred Space,  
National Memorial  
Centre**

**Beechwood Cemetery**

## WINTER UPLANDS

*Lampman, Archibald (1861-1899)*

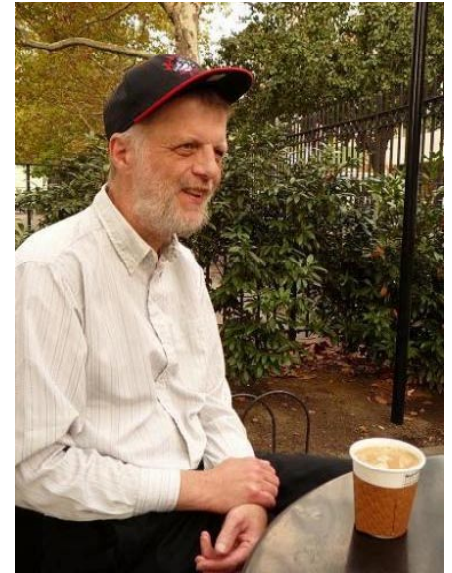
The frost that stings like fire  
upon my cheek,  
The loneliness of this forsaken  
ground,  
The long white drift upon  
whose powdered peak  
I sit in the great silence as  
one bound;  
The rippled sheet of snow  
where the wind blew  
Across the open fields for  
miles ahead;  
The far-off city towered and  
roofed in blue  
A tender line upon the  
western red;  
The stars that singly, then in  
flocks appear,  
Like jets of silver from the  
violet dome,  
So wonderful, so many and  
so near,  
And then the golden moon to  
light me home—  
The crunching snowshoes and  
the stinging air,  
And silence, frost and beauty  
everywhere.

## Our Sad News

Bill Royds passed away on Feb. 20. Bill had the initial vision of the pathway, snowshoeing one day near his home, seeing the sun glint off the Parliament Buildings. He remembered a poem he had studied in high school – “Winter Uplands,” by Archibald Lampman.

Bill, a creative guy, with the enthusiasm and energy of six people, was a software programmer, a singer, a lover of poetry and nature, a dedicated and loving father to his three wonderful daughters, and a devoted husband. His brilliant mind made him an inspiration.

Full of courage, even in illness, he lived his life with joy. He helped plan his final concert. At the end he was interested in everything, and teeming with ideas. He cared passionately about the



Pathway. We think Bill knows the good news that came shortly after his death.

## Our Good News

Thank you, Ottawa! We are happy to tell you that our application to the city for a Heritage grant was successful. We are planning a website and the first three plaques to mark the anchors of the Pathway.

We'd like to thank people – in particular all those people who wrote us letters of support. We thank **BRIAN FROMMER** who has given us advice, and time and talent in designing our logo and the poster for last June's concert, *Singing Woods*. Also **JUDY KIRSH** whose advice and support has been generous and invaluable. **JOANNE TAIT** and the members of the **McGill Alumni Choir** - the poets who read for *Singing Woods*: **CLIVE DOUCET, RONNIE R. BROWN,**

**ROB McLENNAN, BLAINE MARCHAND;** and **MARY HARDY** for the hours helping with layout, and design, her computer expertise on various projects, and for designing this newsletter.

In other good news, the English Department of Carleton University is supporting the Pathway. And there are two concerts being planned to benefit the Pathway. Competitions are on the way!

*Our  
application  
was  
successful*

## A Concert for Bill – with Music and Poetry

This beautiful concert, June 19, will celebrate Bill, his vision of the Poets' Pathway, and Canadian music and poetry.

Performing are the **Chalice Choir of the First Unitarian Congregation of Ottawa**, led by **Jane Perry**, and the **Ottawa McGill Alumni Choir**, led by **Joanne Tait**. The McGill Alumni Choir performed in our concert, **Singing Woods**, last June.

The combined choirs will sing "Prayer," a poem written by **Susan McMaster** to music composed by **John Armstrong**. We are grateful for their gift. **Elisabeth Morrison** and **Ellen Fry** accompany the choirs.

**Ben Glossop**, bassoonist and composer, will play a Canadian piece.

**JUNE 19**  
**7:30 pm**  
 in the  
**NATIONAL ARCHIVES AUDITORIUM**  
**395 Wellington Street**  
**Admission \$20.00,**  
**\$15.00 for students, seniors and members**

Some of Ottawa's wonderful poets will also perform.

**Susan McMaster, Ronnie R. Brown, Oni the Haitian Sensation, and Diane Stevenson Schmolka** will read some of their work.

After the concert, there will be a reception in the foyer.



## A Pub Concert

Later this year a pub concert will be held to benefit the Poets' Pathway.

Spoken word poets, and singer-songwriters **Jehan Khorshed**, (CD **Jehan Khorshed**), **Matt Ouimet**, (CD **Silently**), and possibly **The Polytones** (CDs **You and I were made of dynamite...** and **Polytone**) will perform.

**Cari Leslie**, of **Crush Improv**, and host of YTV's *World of Wonders* will host the show. **Cari** plays with **Crush Improv** May 1, at GoGo's ( [www.crushimprov.com](http://www.crushimprov.com).)

### Indian Summer

Now by the brook the maple leans  
 With all his glory spread,  
 And all the sumachs on the hills  
 Have turned their green to red.

William Wilfred Campbell

## VOLUNTEERS NEEDED

If you are interested in volunteering for just about anything, contact us by email.

We are always looking for dependable, interested people.

Are you:

a graphic artist

a translator

an accountant

a lawyer

a good communicator?

An enthusiastic outdoors person?

Or, are you:

willing to put up posters and take tickets at concerts?

knowledgeable about fund raising?

happy to help in any way?



## La rivière

“Le Rideau passe au bas,  
riant sous son flot noir...”

Alfred Gameau

## Number 19 (on the Pathway map)

By Ben Glossop

The least traveled part of the path is also the most traveled.

The path changes over time, and this is the last day to walk it before it turns to mud.

I am sure the Inuit would call hard melting snow “walking snow,” because the woods this afternoon are calming as the light shines low, not an adventuresome jumping from log to log, root to root, through the bog.

Being able to steal an hour from the fluorescence of the Children’s Hospital to hear children walk home from school, and to engage muscles to quiet the mind is a gift I take with gratitude.



As with all journeys, long or short, we return different than we left. And I thank the winter for its effect on the swamp.

## What You Can Do for the Pathway

By J. Moore

- Take photos of the Pathway and send them to us for the new website.
- Buy a membership for \$20.00. Or send us a donation. Your membership will get you our newsletter and a discount at our events.
- Help us map the Pathway.
- Let us know if you would like to have, or lead, an activity on the Pathway.
- Tell people about the Pathway. Join Facebook’s Poets’ Pathway group.
- Tell us if you know about some botanical or geographic feature of the Pathway.
- Think about entering Youtube and poetry competitions in the fall.
- Tell us about a group we should contact.