

LEAR REVIEW

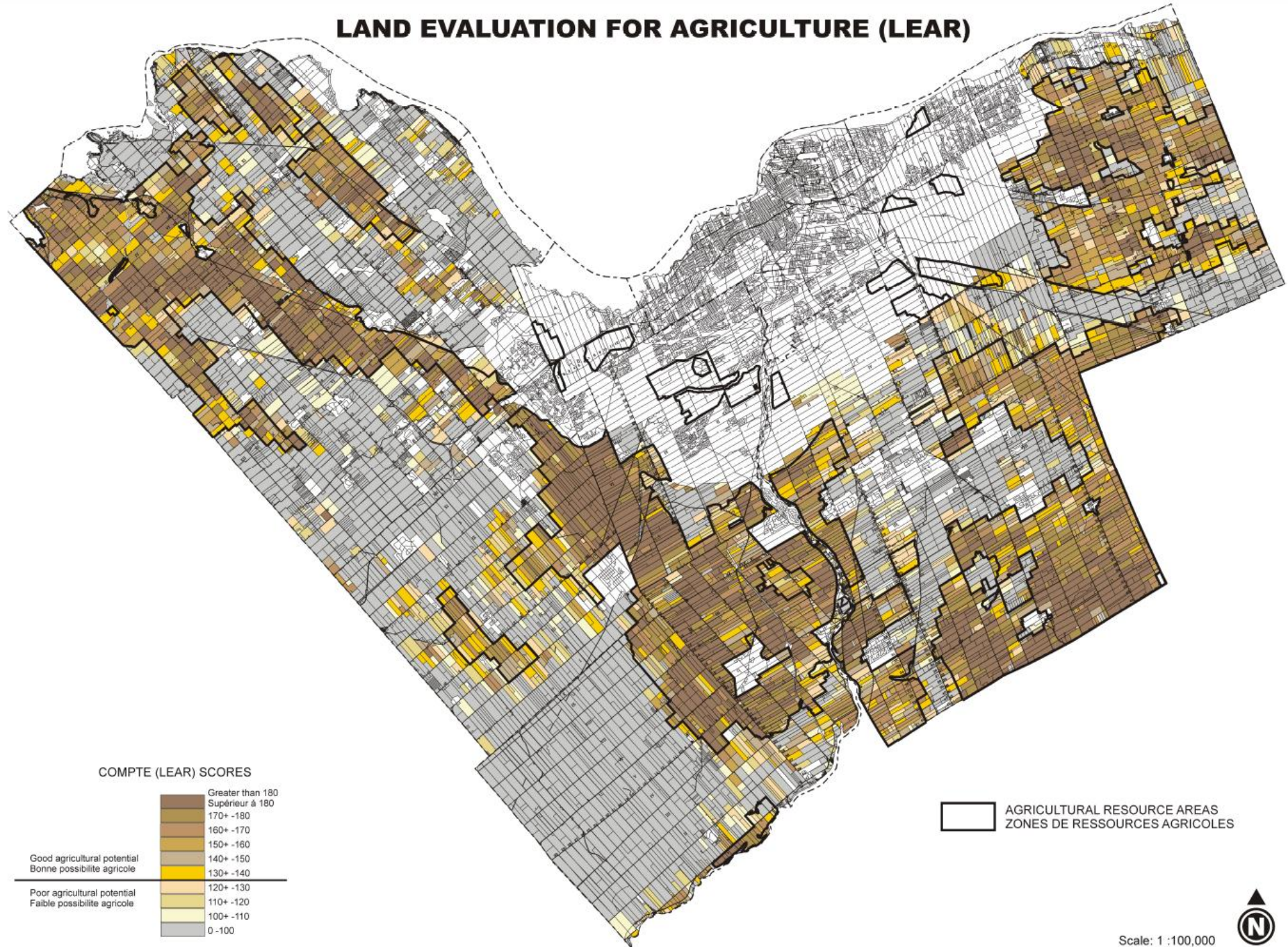
Ottawa Soils Mapping Update

Presented by: Bruce Finlay
Date: 7th May 2015

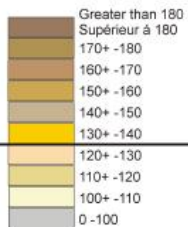
LEAR

- LE = Land Evaluation
 - Ranks Parcels based on soil capability for Agriculture
- AR = Area Review
 - % of land used for farming purpose
 - Parcel Size – bigger is better for Agriculture
 - Impact of surrounding conflicting uses
- RMOC LEAR 1997, Staff began update in 2010

LAND EVALUATION FOR AGRICULTURE (LEAR)



COMPTE (LEAR) SCORES



Good agricultural potential
Bonne possibilité agricole

Poor agricultural potential
Faible possibilité agricole

AGRICULTURAL RESOURCE AREAS
ZONES DE RESSOURCES AGRICOLES

Scale: 1 : 100,000



LEAR Advisory Committee

- Required by the Provincial LEAR Guideline
- Committee met up until December 2012
- Reviewed and compared LEAR models with 1997 RMOC LEAR
- Testing models with new soils information generated discrepancies with 1997 results
- Staff and consultant concluded errors with soil data

Ottawa Soils Mapping Update



Phase 1 Field work

- Sampling undertaken July to Dec 2014
- City team working with OMAFRA
- Two sample areas 9 kms square near Kinburn and North Gower
- Results still being assessed by OMAFRA
- Confirmed problems with Soil Data.
- Next - test areas east of the Rideau

Recommendation

- Recall the LEAR Advisory Committee
- Update Committee Terms of Reference
- Engage Committee in Soils Mapping project
- Expedite completion of Soils project to finish LEAR review.

