



# Natural, Liveable Ottawa

April 28, 2015

Nick Stow (Ph.D., EP) Senior Planner,  
Land use and Natural Systems

### Mission

The Natural Systems Unit serves the city of Ottawa through the development and implementation of policies and guidelines to sustain the natural environment for current and future generations.

### Projects

#### Official Plan Policies and Guidelines

- Significant Woodlands and Wetlands
- Protection of Surface Water
- Wildlife Construction Protocol

#### Master Plans and Studies

- Urban Forest Management Plan
- Subwatershed Studies
- Urban Natural Areas Environmental Evaluation Study
- Greenspace Master Plan

#### Development Review and Inquiries

- Environmentally Sensitive Development
- Tree Conservation Reports
- Species at Risk
- Woodlot and Watercourse Inquiries
- Environmental Assessments for Municipal Infrastructure Projects
- Acquisition of Significant Natural Areas

#### Engage Residents Positively

- Planning Primer
- Wildlife Speaker Series

### Mission

L'Unité des systèmes naturels s'est engagée à servir la ville d'Ottawa dans le cadre du processus de développement et mise en œuvre des politiques et lignes directrices pour maintenir l'environnement naturel pour les générations actuelles et futures.

### Projets

#### Plan officiel et lignes directrices

- Boisés d'importance et terres humides
- Protection des eaux
- Protocole de chantiers de construction respectueux de la faune

#### Plans directeurs et études

- Plan de gestion de la forêt urbaine
- Études des bassins et sous-bassins hydrographiques
- Étude d'évaluation environnementale des espaces naturels urbains
- Plan directeur des espaces verts

#### Examen des demandes d'aménagement et questions

- Une planification respectueuse de l'environnement
- Rapports sur la conservation des arbres
- Espèces en péril
- Questions - cours d'eau et terrains boisés
- Les évaluations environnementales de projets municipaux d'infrastructure
- L'acquisition des espaces naturels

#### L'engagement positif du public

- Abécédaire de l'aménagement
- Série de conférences sur la faune urbaine

# **Ottawa Natural Systems Team**

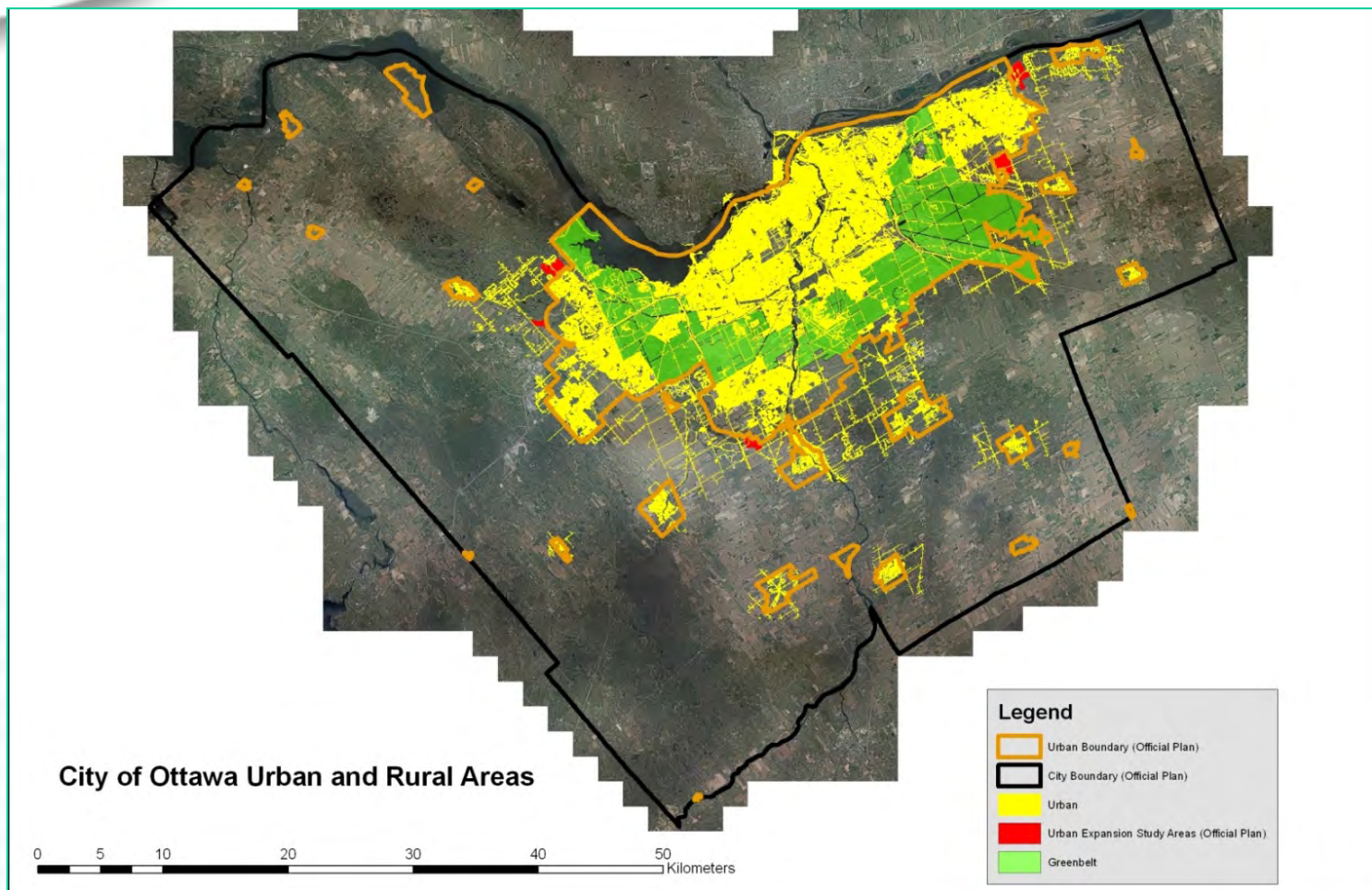
## **Core Team**

- ❑ **Marica Clarke: Program Manager, Land Use and Natural Systems**
- ❑ **Nick Stow, Ecologist**
- ❑ **Amy MacPherson, Ecologist**
- ❑ **Jennifer Boyer, Planner**
- ❑ **Lise Guevremont, Planner**
- ❑ **Mark Richardson, Planning Forester**
- ❑ **Martha Copestake, Planning Forester**

## **Supporting**

- ❑ **Matthew Hayley, Development Review Planner**
- ❑ **Sami Rehman, Development Review Planner**





## Quick Facts

Area is 2826 km<sup>2</sup>

- 1/3 Urban
- 1/3 Agriculture
- 1/3 Natural Area

30% forest cover:

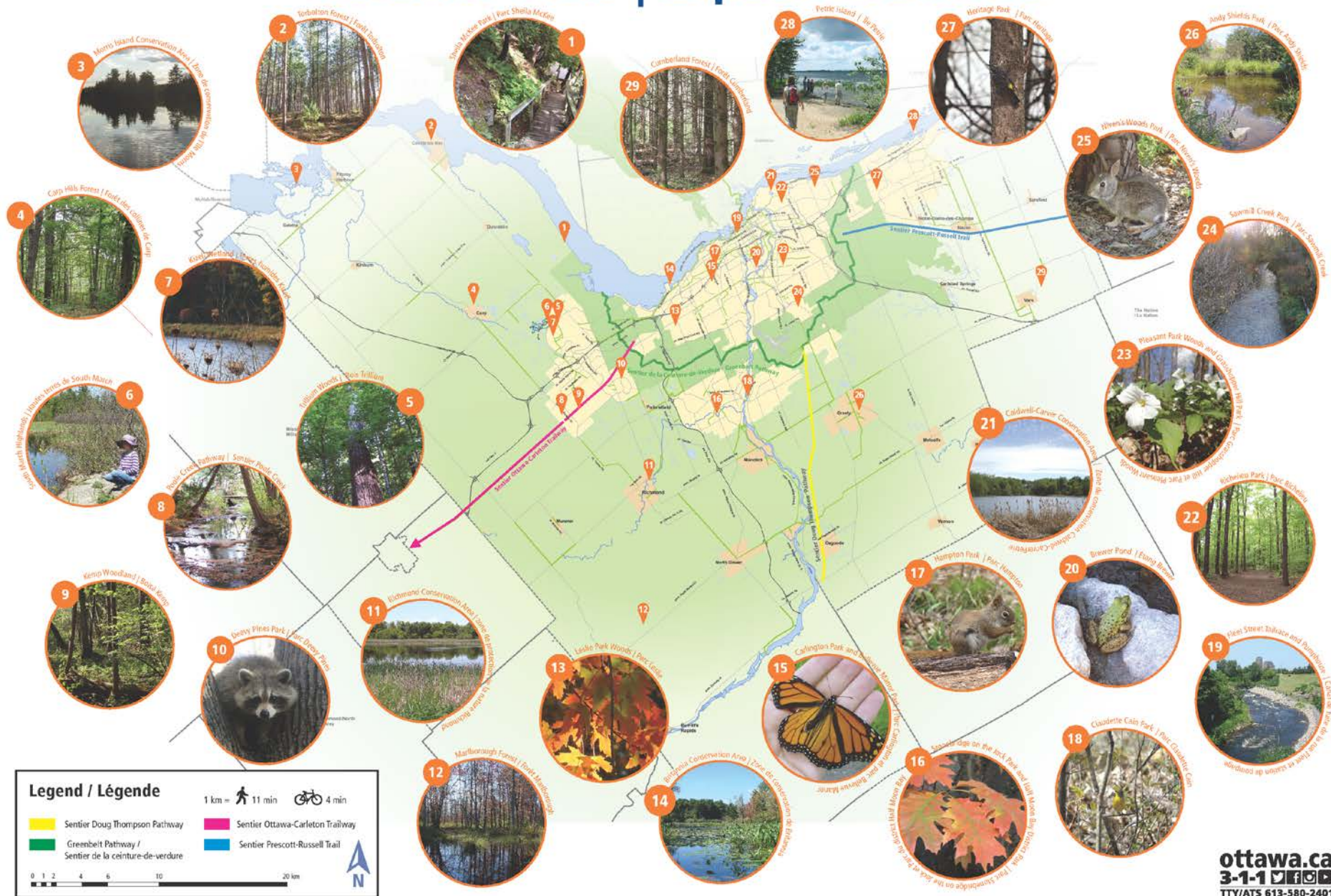
- 8% interior
- 3% deep interior

• 20% wetland cover:

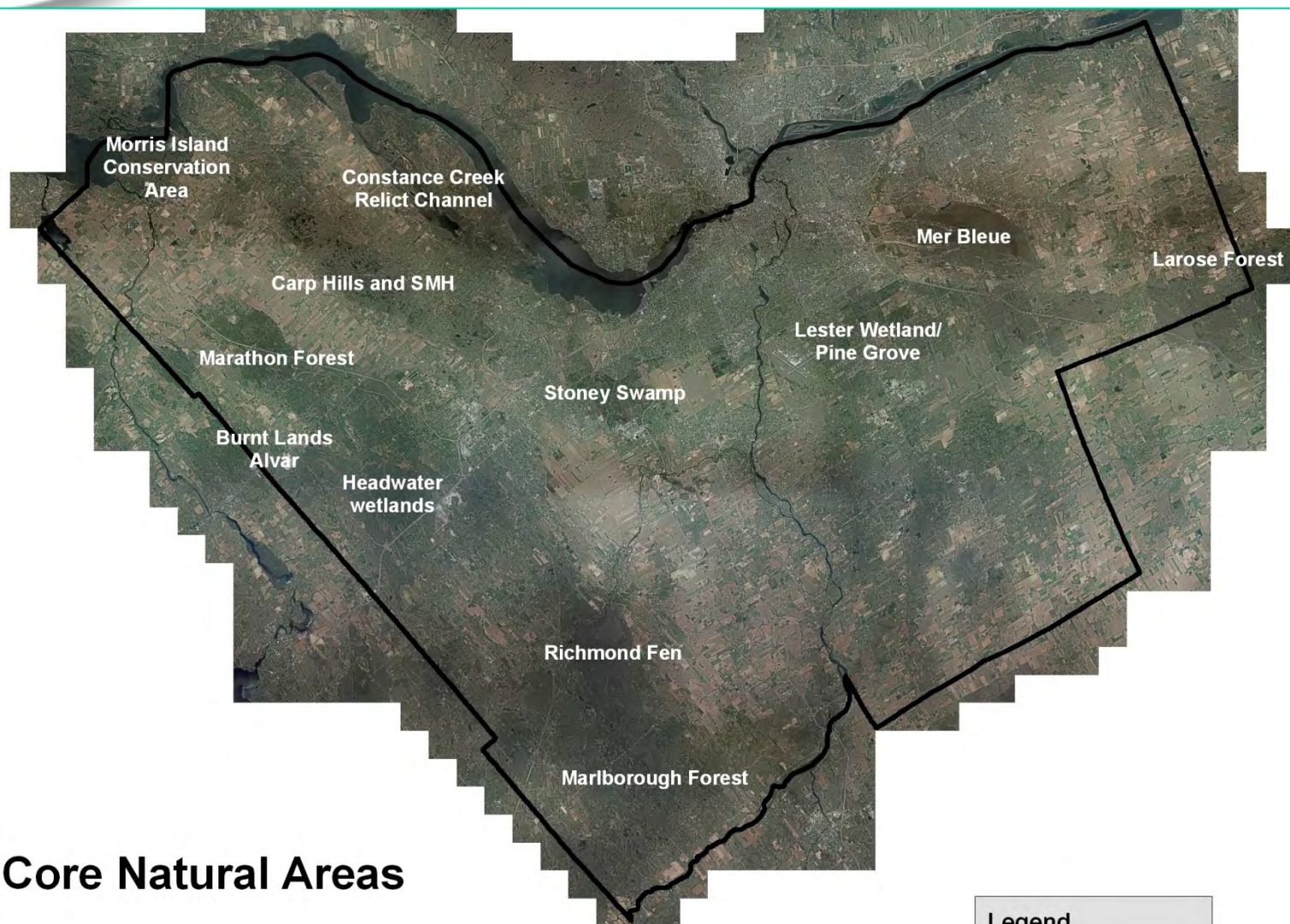
- Overlap with forest
- Approx. 60% of original



# Natural Areas | Espaces naturels








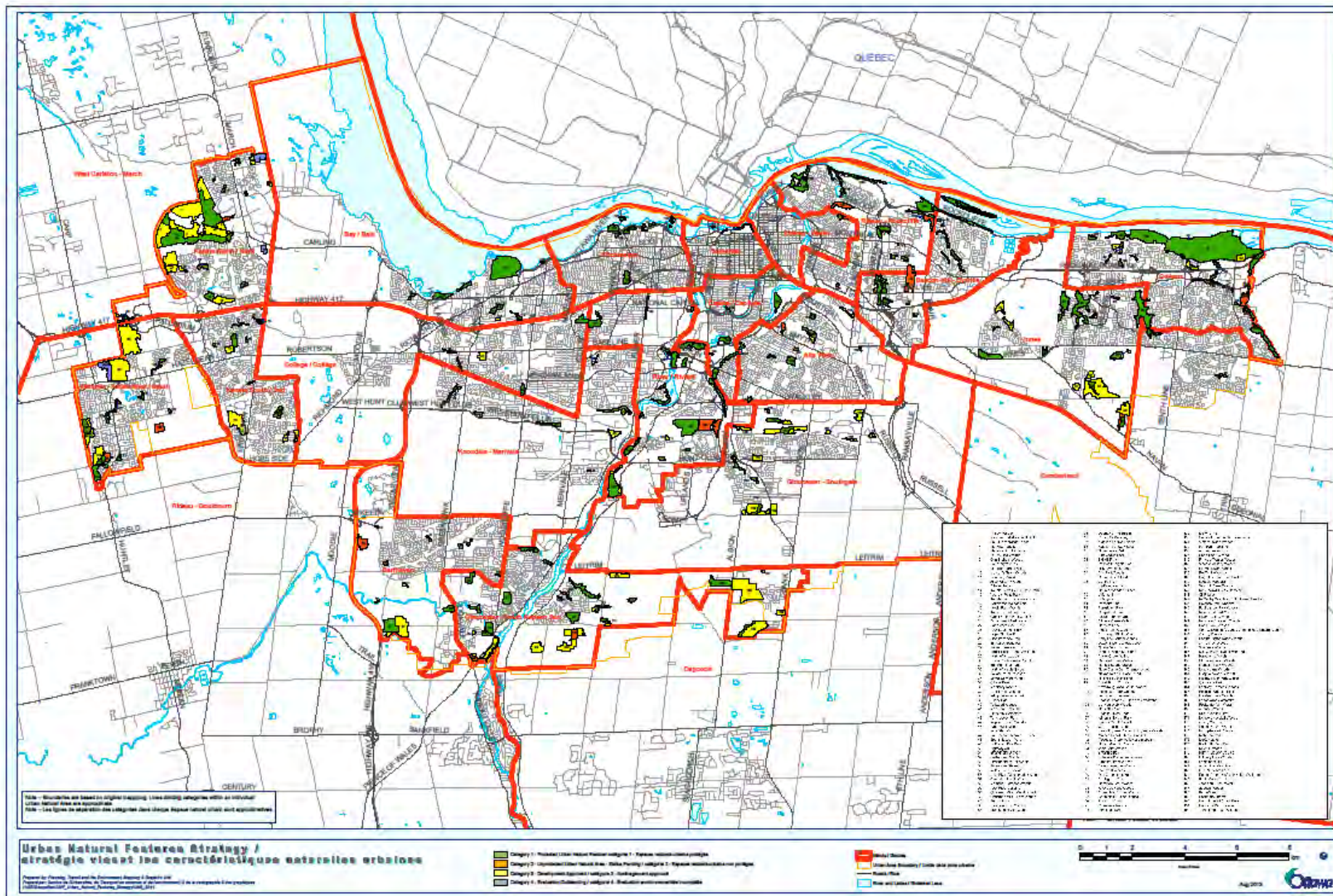
## Core Natural Areas

0 5 10 20 30 40 50 Kilometers

### Legend

 City Boundary (Official Plan)







# Provincial Policy Statement 2005

## TABLE OF CONTENTS

<b>Part I</b>	<b>PREAMBLE</b>	<b>1</b>
<b>Part II</b>	<b>LEGISLATIVE AUTHORITY</b>	<b>1</b>
<b>Part III</b>	<b>HOW TO READ THE PROVINCIAL POLICY STATEMENT</b>	<b>1</b>
<b>Part IV</b>	<b>VISION FOR ONTARIO'S LAND USE PLANNING SYSTEM</b>	<b>2</b>
<b>Part V</b>	<b>POLICIES</b>	<b>4</b>
<b>1.0</b>	<b>BUILDING STRONG COMMUNITIES</b>	<b>4</b>
1.1	Managing and Directing Land Use to Achieve Efficient Development and Land Use Patterns	4
	Settlement Areas	5
	Rural Areas in Municipalities	6
	Rural Areas in Territory Without Municipal Organization	7
1.2	Coordination	7
1.3	Employment Areas	8
1.4	Housing	8
1.5	Public Spaces, Parks and Open Space	10
1.6	Infrastructure and Public Service Facilities	10
	Sewage and Water	10
	Transportation Systems	12
	Transportation and Infrastructure Corridors	12
	Airports	12
	Waste Management	13
1.7	Long-Term Economic Prosperity	13
1.8	Energy and Air Quality	14
<b>2.0</b>	<b>WISE USE AND MANAGEMENT OF RESOURCES</b>	<b>15</b>
2.1	Natural Heritage	15
2.2	Water	16
2.3	Agriculture	17
2.4	Minerals and Petroleum	18
2.5	Mineral Aggregate Resources	19
2.6	Cultural Heritage and Archaeology	21
<b>3.0</b>	<b>PROTECTING PUBLIC HEALTH AND SAFETY</b>	<b>22</b>
3.1	Natural Hazards	22
3.2	Human-made Hazards	23
<b>4.0</b>	<b>IMPLEMENTATION AND INTERPRETATION</b>	<b>24</b>
<b>5.0</b>	<b>FIGURE 1</b>	<b>26</b>
<b>6.0</b>	<b>DEFINITIONS</b>	<b>28</b>



# Natural Heritage Policies

## 2.1 NATURAL HERITAGE

2.1.1 Natural features and areas shall be protected for the long term.

2.1.2 The diversity and connectivity of natural features in an area, and the long-term *ecological function* and biodiversity of *natural heritage systems*, should be maintained, restored or, where possible, improved, recognizing linkages between and among *natural heritage features and areas, surface water features and ground water features*.

2.1.3 *Development and site alteration shall not be permitted in:*

- a) *significant habitat of endangered species and threatened species;*
- b) *significant wetlands in Ecoregions 5E, 6E and 7E<sup>1</sup>; and*
- c) *significant coastal wetlands.*

2.1.4 *Development and site alteration shall not be permitted in:*

- a) *significant wetlands in the Canadian Shield north of Ecoregions 5E, 6E and 7E<sup>1</sup>;*
- b) *significant woodlands south and east of the Canadian Shield<sup>2</sup>;*
- c) *significant valleylands south and east of the Canadian Shield<sup>2</sup>;*
- d) *significant wildlife habitat; and*
- e) *significant areas of natural and scientific interest*

*unless it has been demonstrated that there will be no negative impacts on the natural features or their ecological functions.*

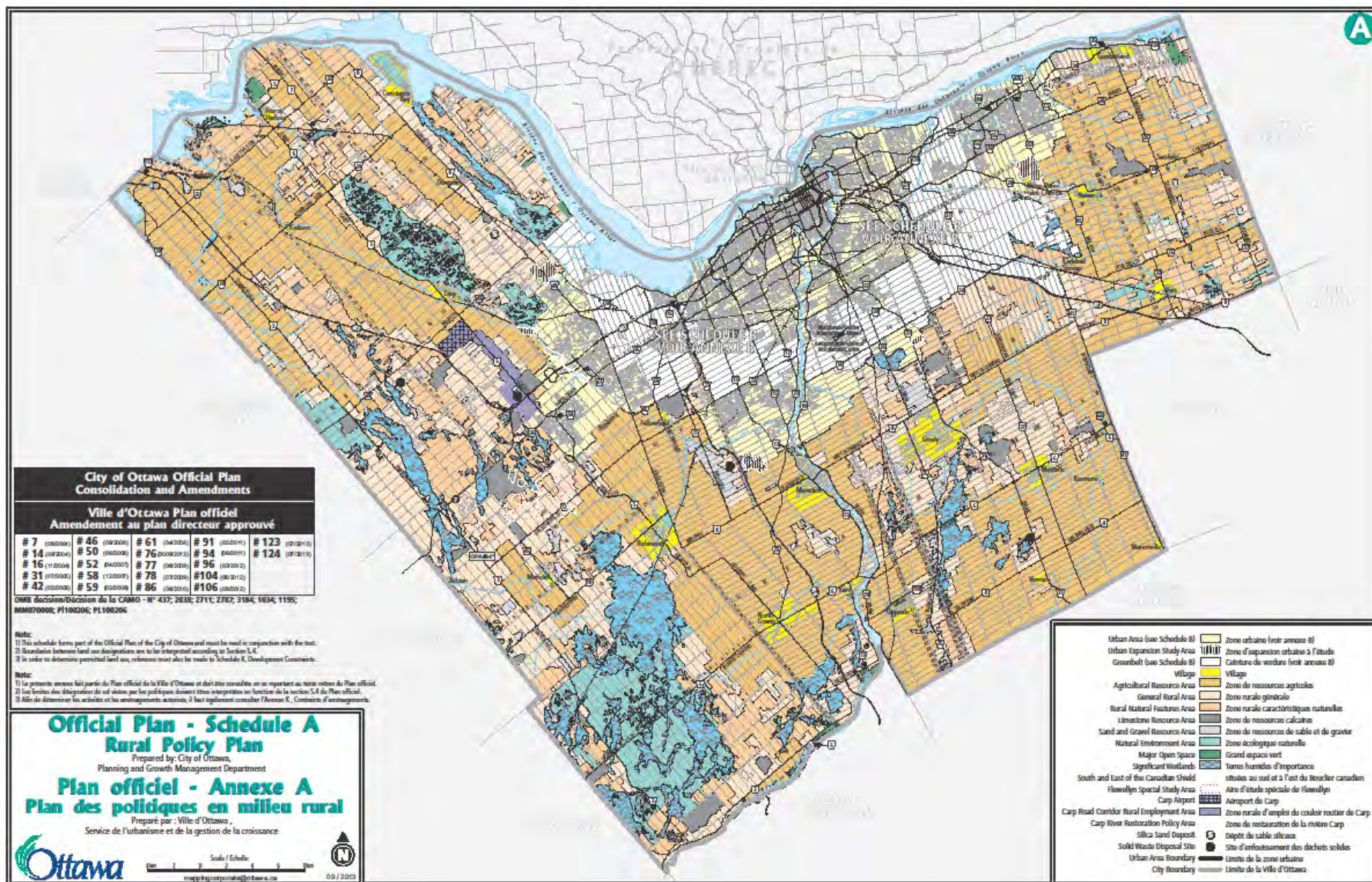
2.1.5 *Development and site alteration shall not be permitted in fish habitat except in accordance with provincial and federal requirements.*

2.1.6 *Development and site alteration shall not be permitted on adjacent lands to the natural heritage features and areas identified in policies 2.1.3, 2.1.4 and 2.1.5 unless the ecological function of the adjacent lands has been evaluated and it has been demonstrated that there will be no negative impacts on the natural features or on their ecological functions.*

2.1.7 Nothing in policy 2.1 is intended to limit the ability of existing agricultural uses to continue.



# Official Plan Schedule A – Rural Land Uses





# Natural Heritage System Designations

## Significant Wetlands

- No development or site alteration
- No negative impact from adjacent development (EIS required).

## Natural Environment Areas

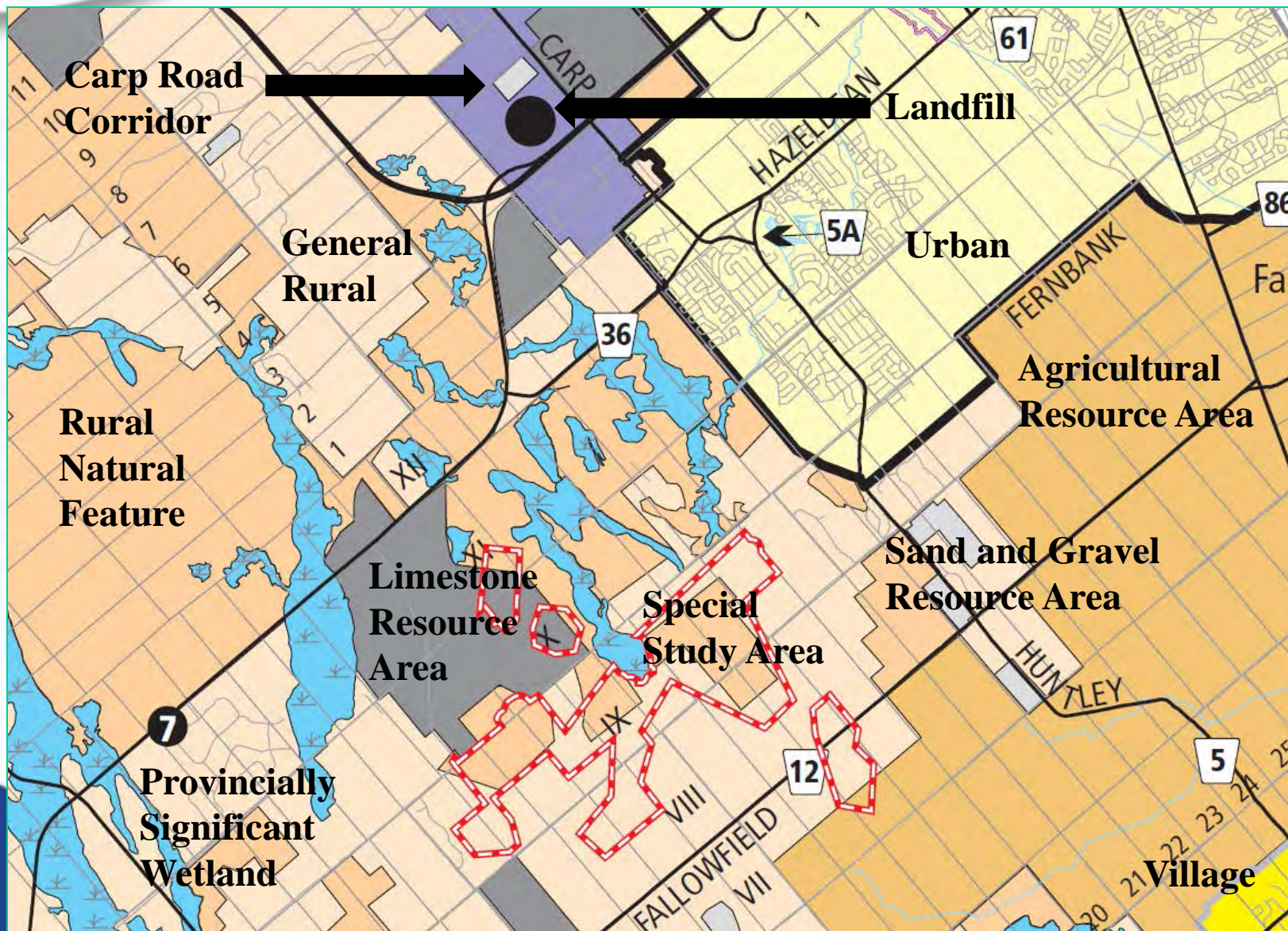
- Core rural natural landscapes
- Restricted uses.
- Development limited to a single dwelling on a existing lot with road frontage

## Urban Natural Features

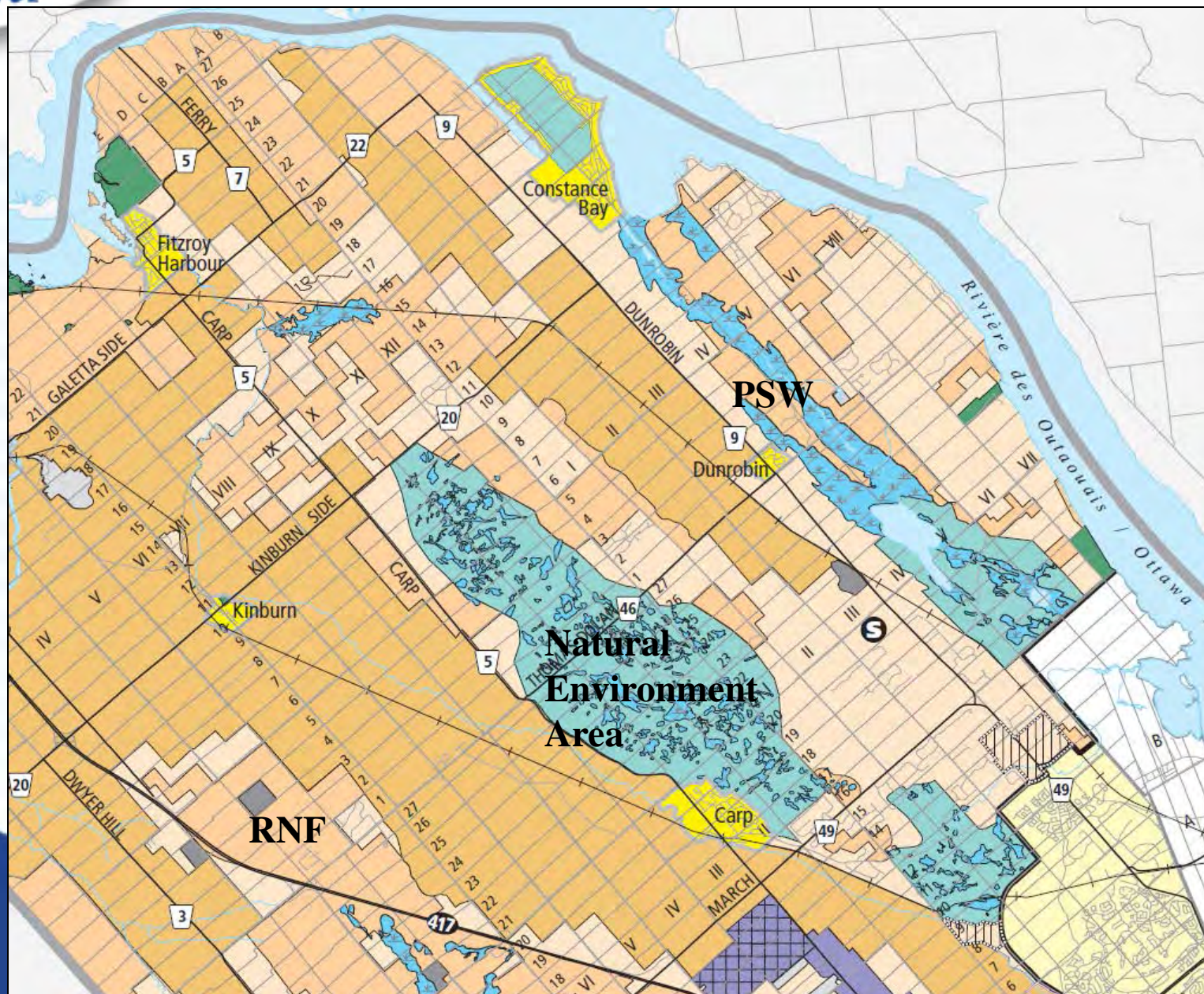
- Core urban natural areas
- Priorities for acquisition (subject to budget)
- No development or site alteration.

## Rural Natural Features

- Other rural natural areas and features: mainly woodlands.
- No negative impact from development (EIS required)

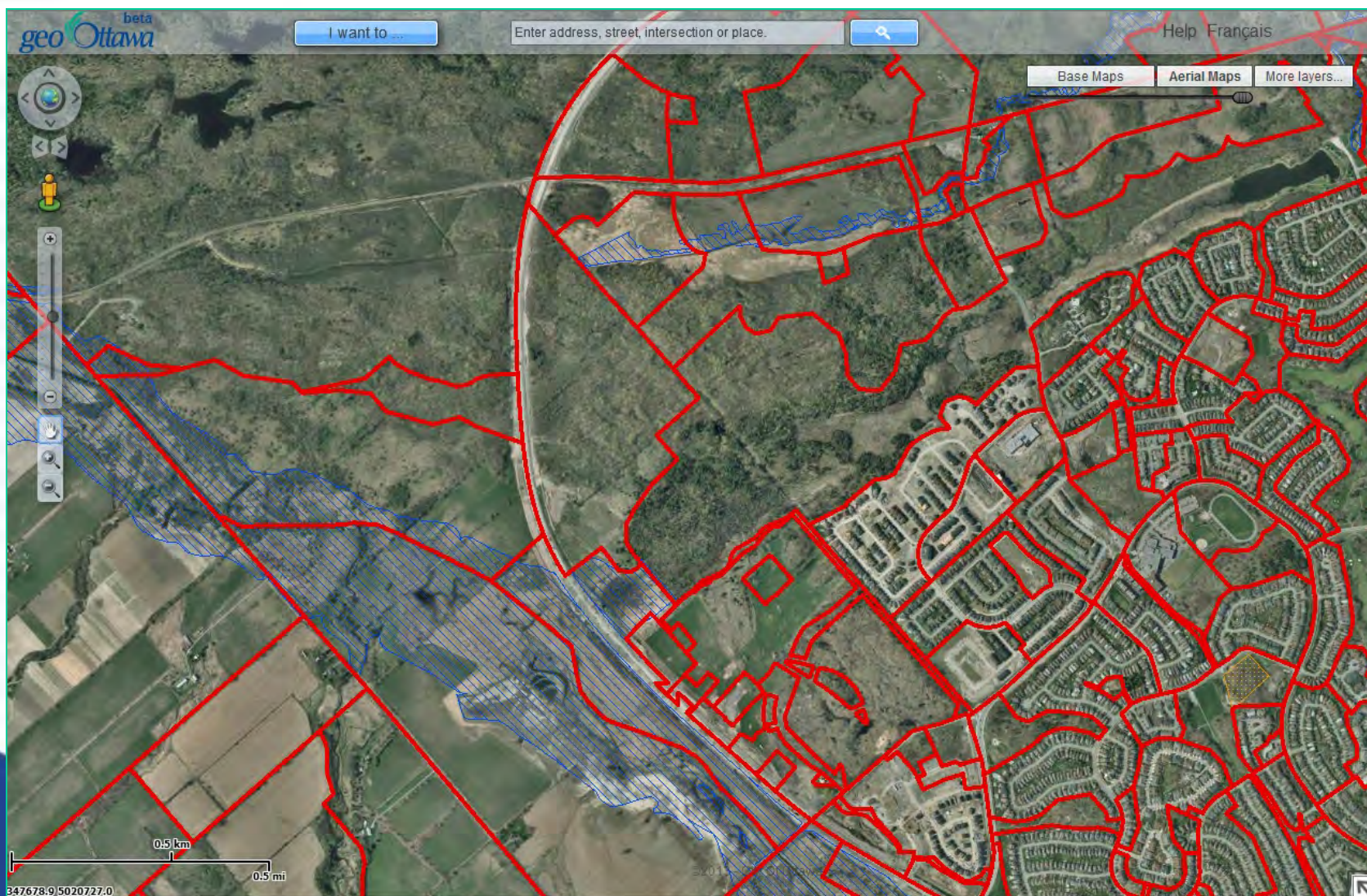




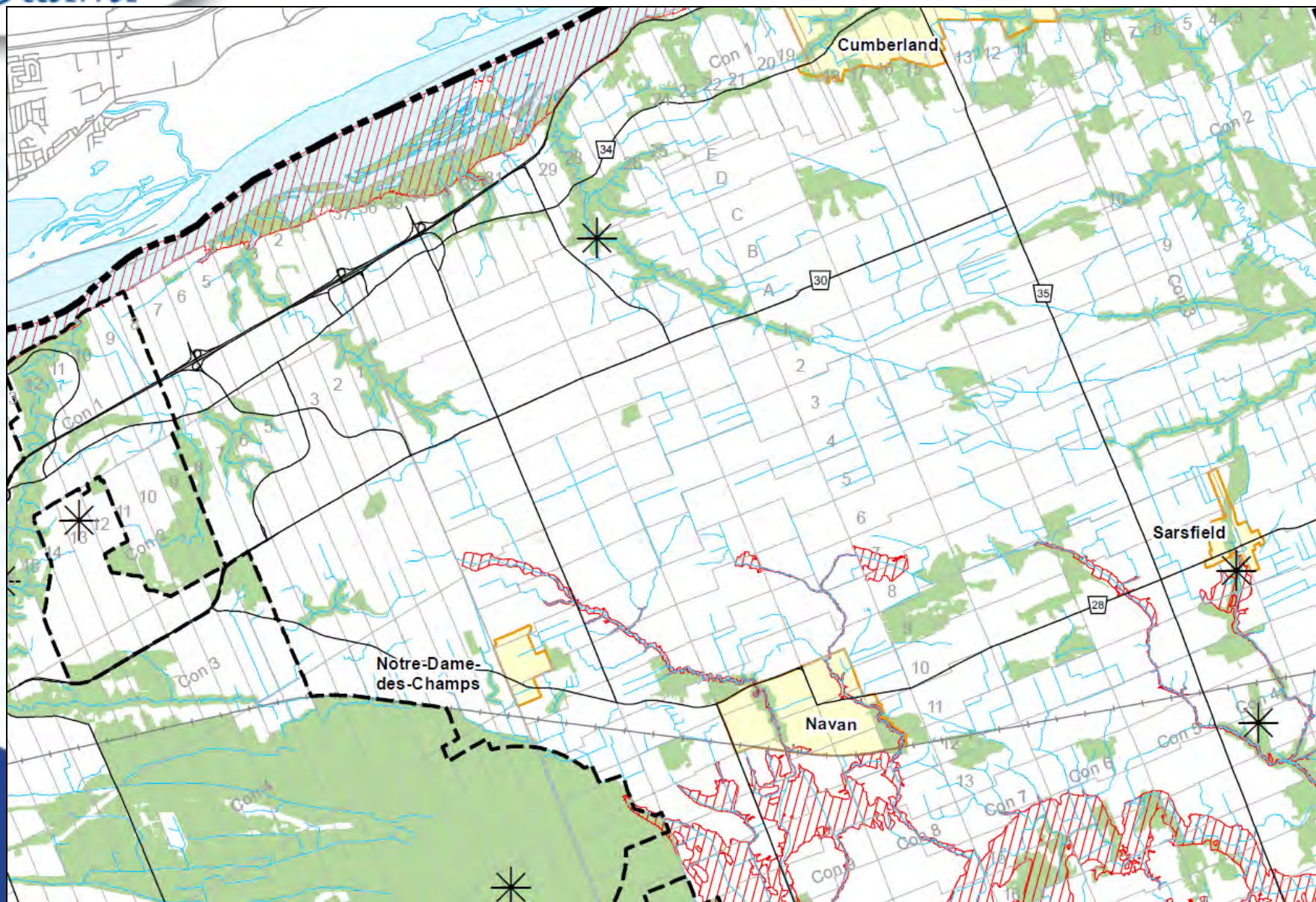




# Zoning Bylaw





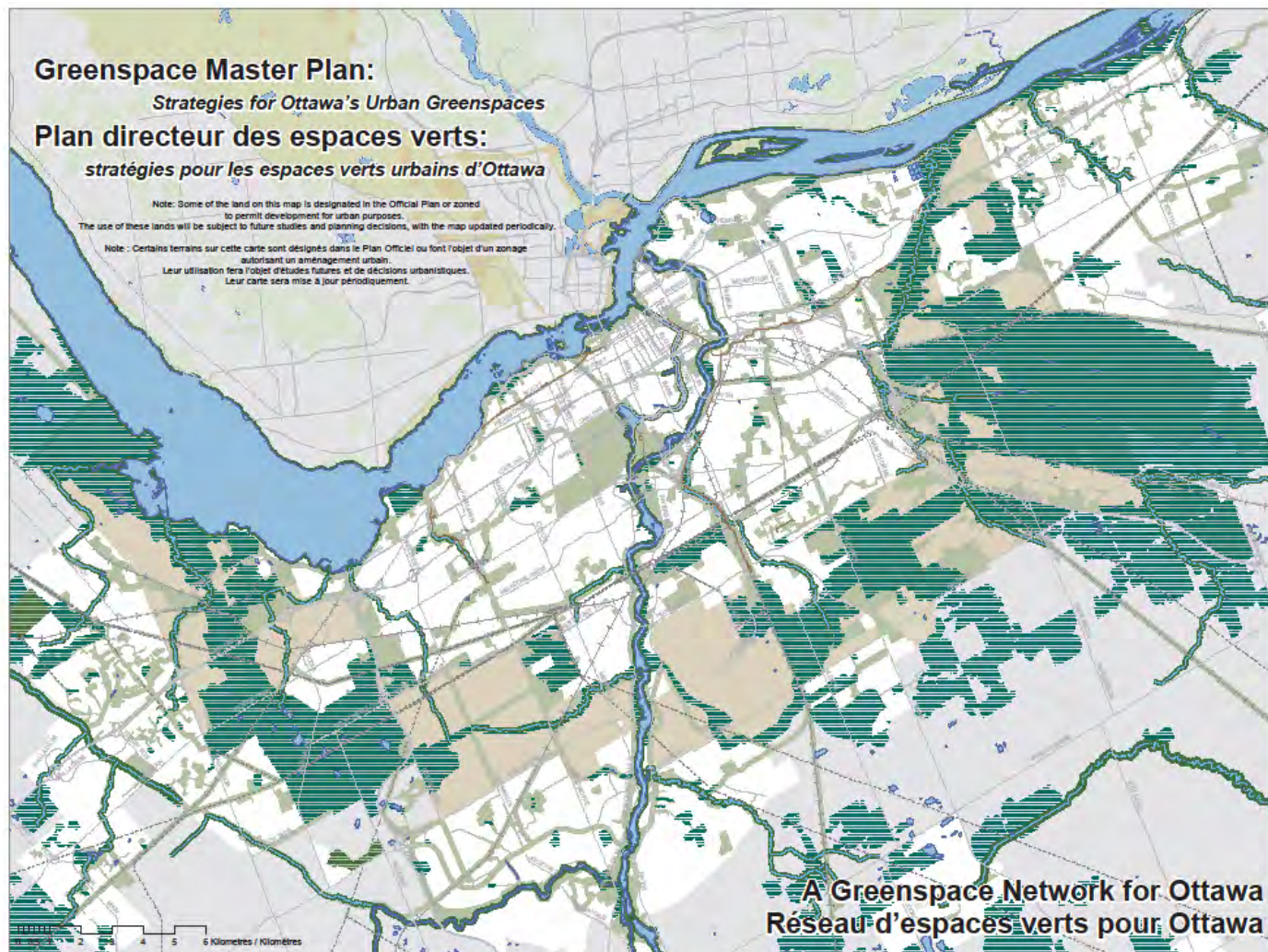


## **Moving from a “features” approach to a “systems” approach**

- ❑ **Ottawa’s natural heritage system consists mainly of poorly connected, core natural areas.**
- ❑ **How do we integrate them into a natural areas network?**



# Greenspace Master Plan



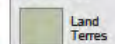
Map 3  
 Carte 3

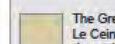
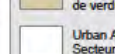
## Legend / Légende

### Natural Lands Terres Naturels

-  Lands  
 Terres
-  Linkages  
 Liaisons

### Open Space and Leisure Lands Espaces ouverts et de loisirs

-  Land  
 Terres
-  Connections  
 Raccordements

-  The Greenbelt  
 Le Ceinture  
 de verdure
-  Urban Area  
 Secteur Urbain

Planning, Environment and Infrastructure Policy Branch  
 Planning and Urban Management Department  
 City of Ottawa  
 Politique d'urbanisme, d'environnement et d'infrastructure  
 Service des politiques et de la gestion de la croissance  
 urbaine  
 August 2008  
 Août 2008







## **Agreement with the Greenspace Alliance**

**“Prior to the next comprehensive Official Plan Review in 2014, the City will identify and map existing and conceptual natural heritage linkages at a City-wide scale, including consideration of regional linkages outside the City boundaries. The City will carry out this work either in partnership with other organizations or agencies (*e.g.* The Nature Conservancy of Canada or the National Capital Commission) or on its own.”**



# **Collaborative Approach to Natural Systems Planning**

- **Three partners and three scales:**
  - **Nature Conservancy of Canada: Ottawa contributed \$20,000 to help fund development of the Ottawa Valley Conservation Plan**
  - **Ottawa has completed its Natural Landscape Linkage Analysis**
  - **The National Capital Commission has completed its Greenbelt Master Plan**

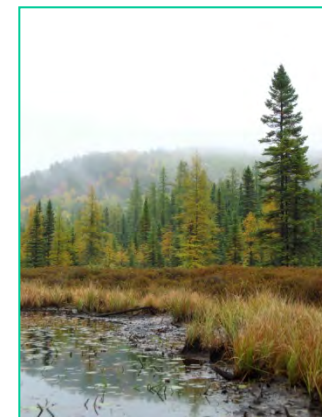
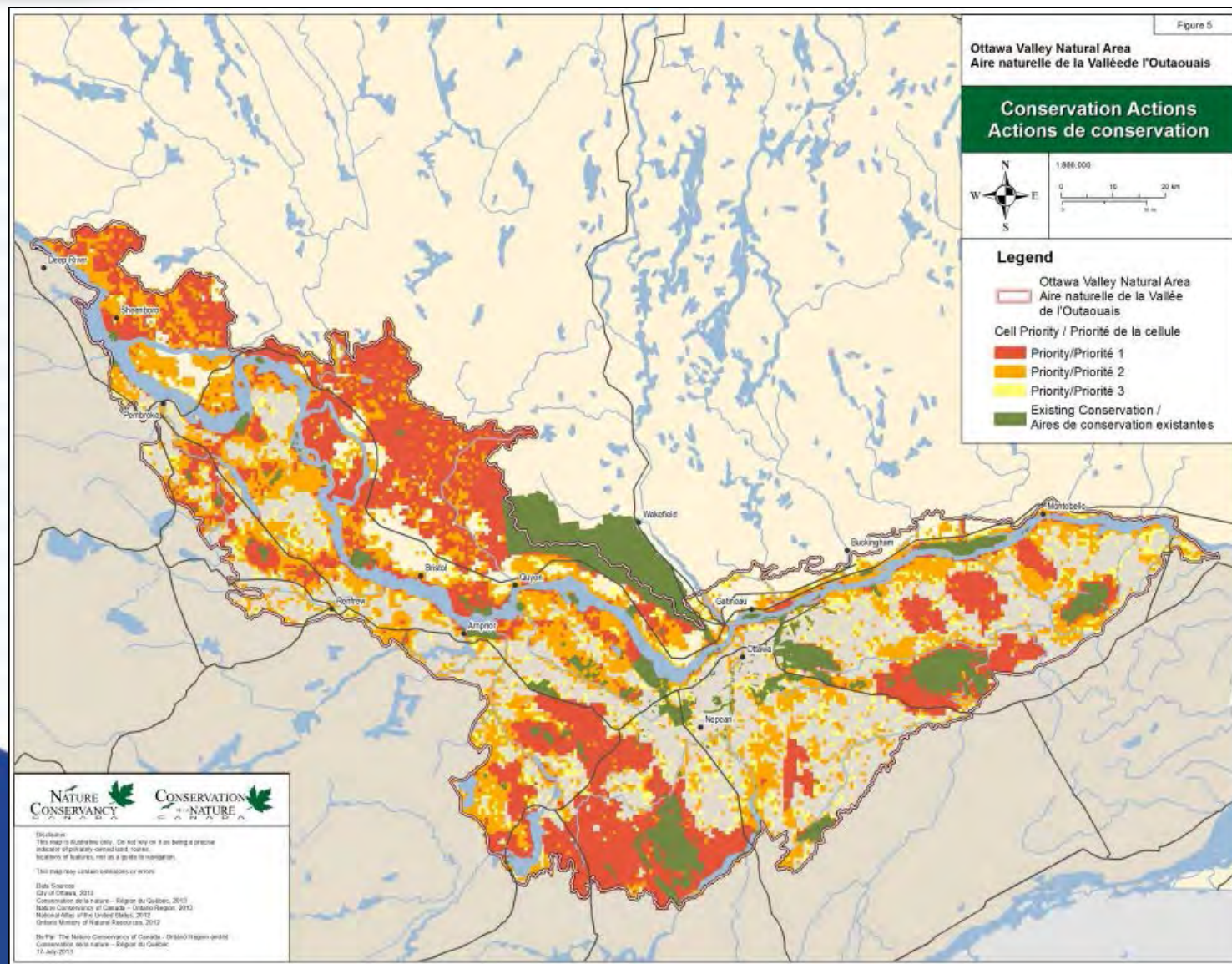


# Greater Landscape Context: Algonquin to Adirondacks (A2A)



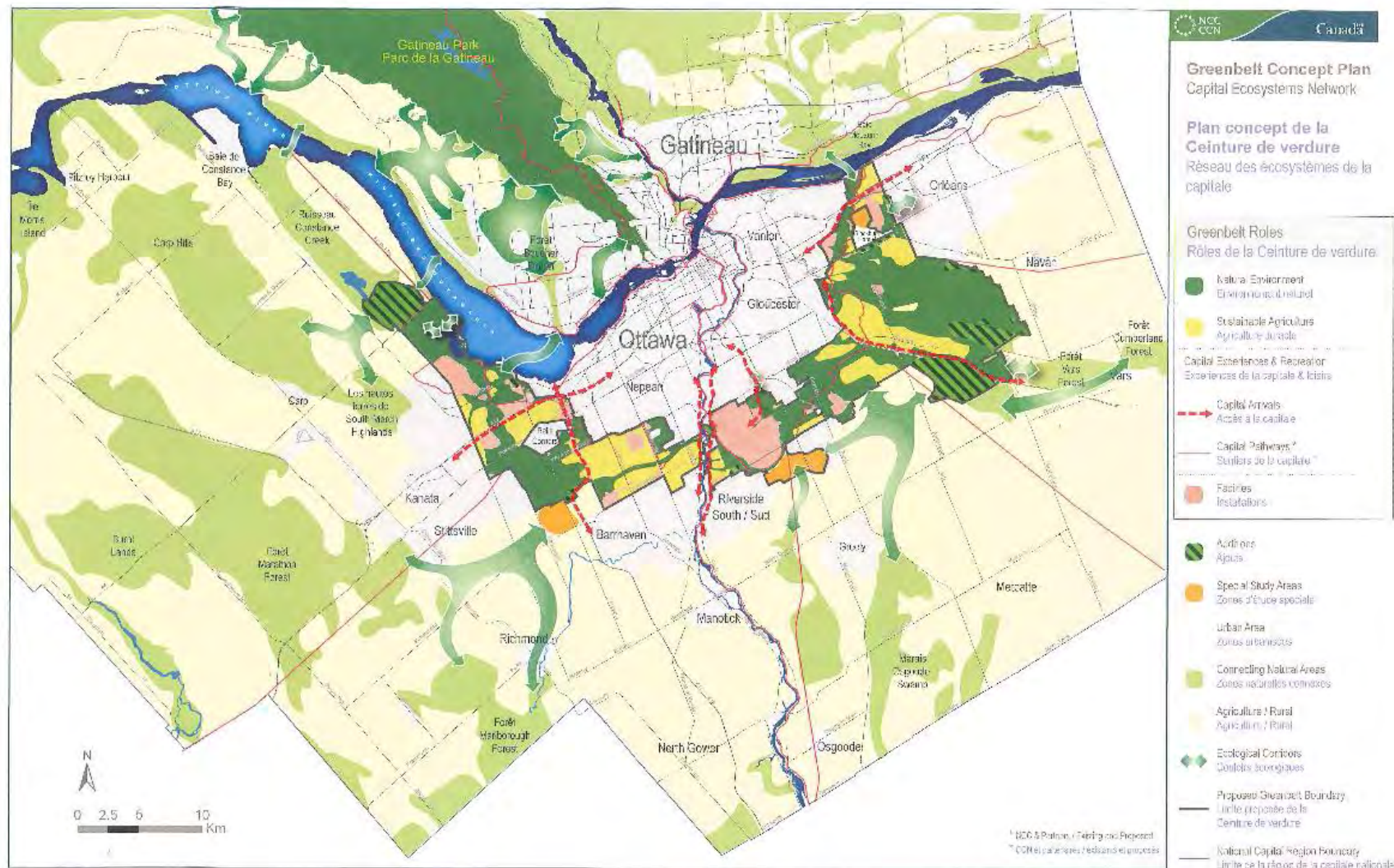


# Ottawa Valley Conservation Plan



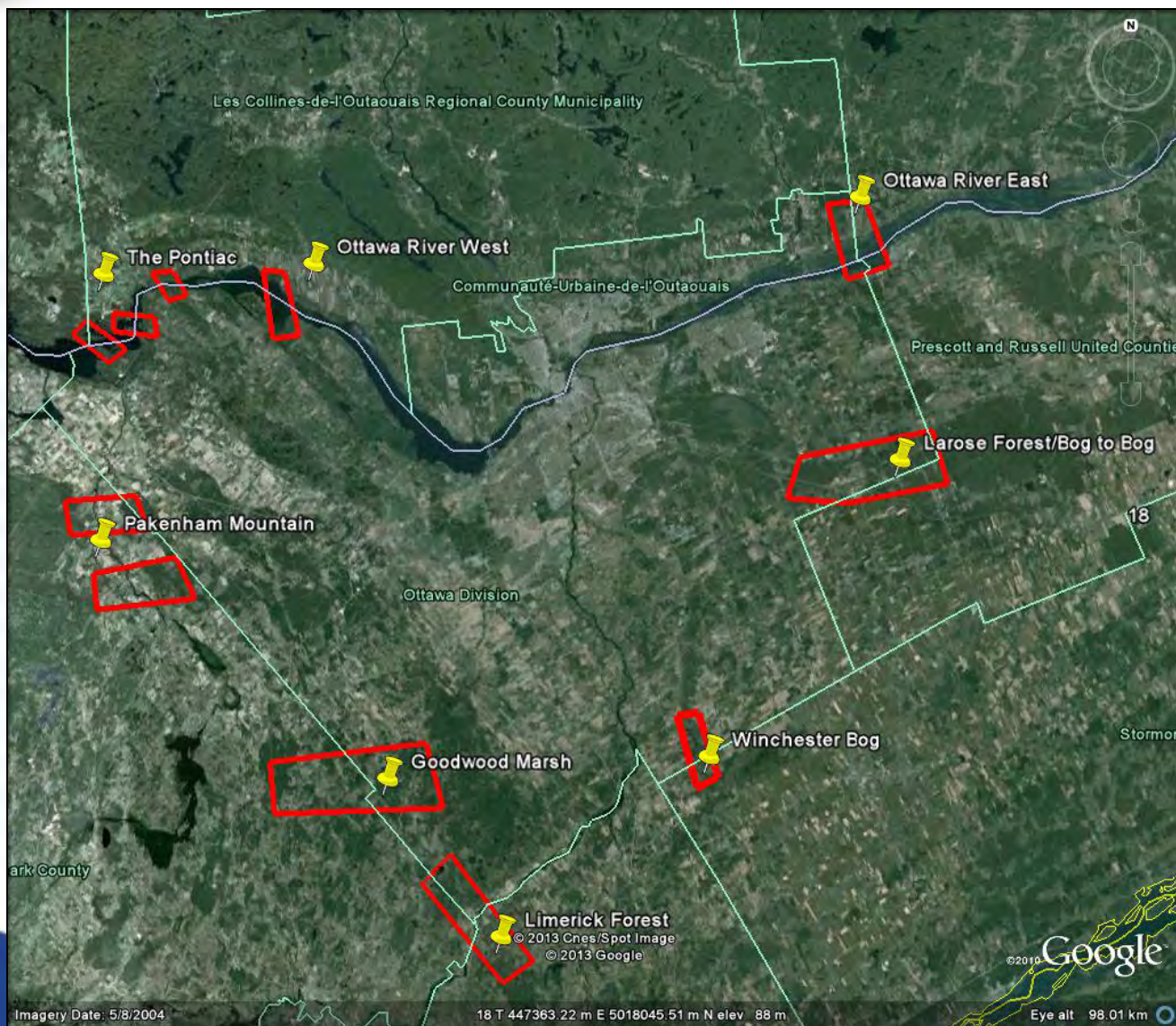


# Greenbelt Master Plan



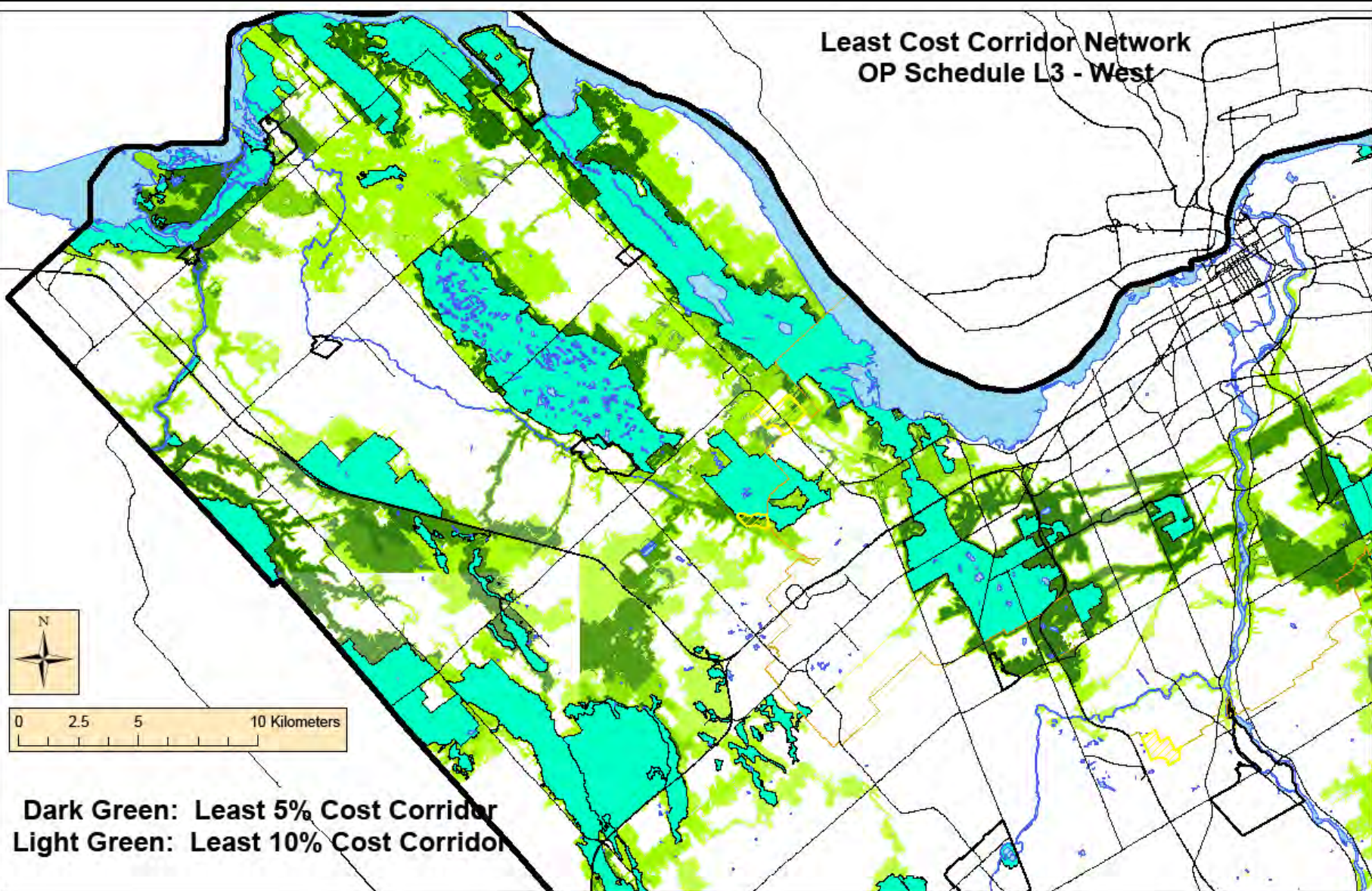


# Landscape Linkage Analysis

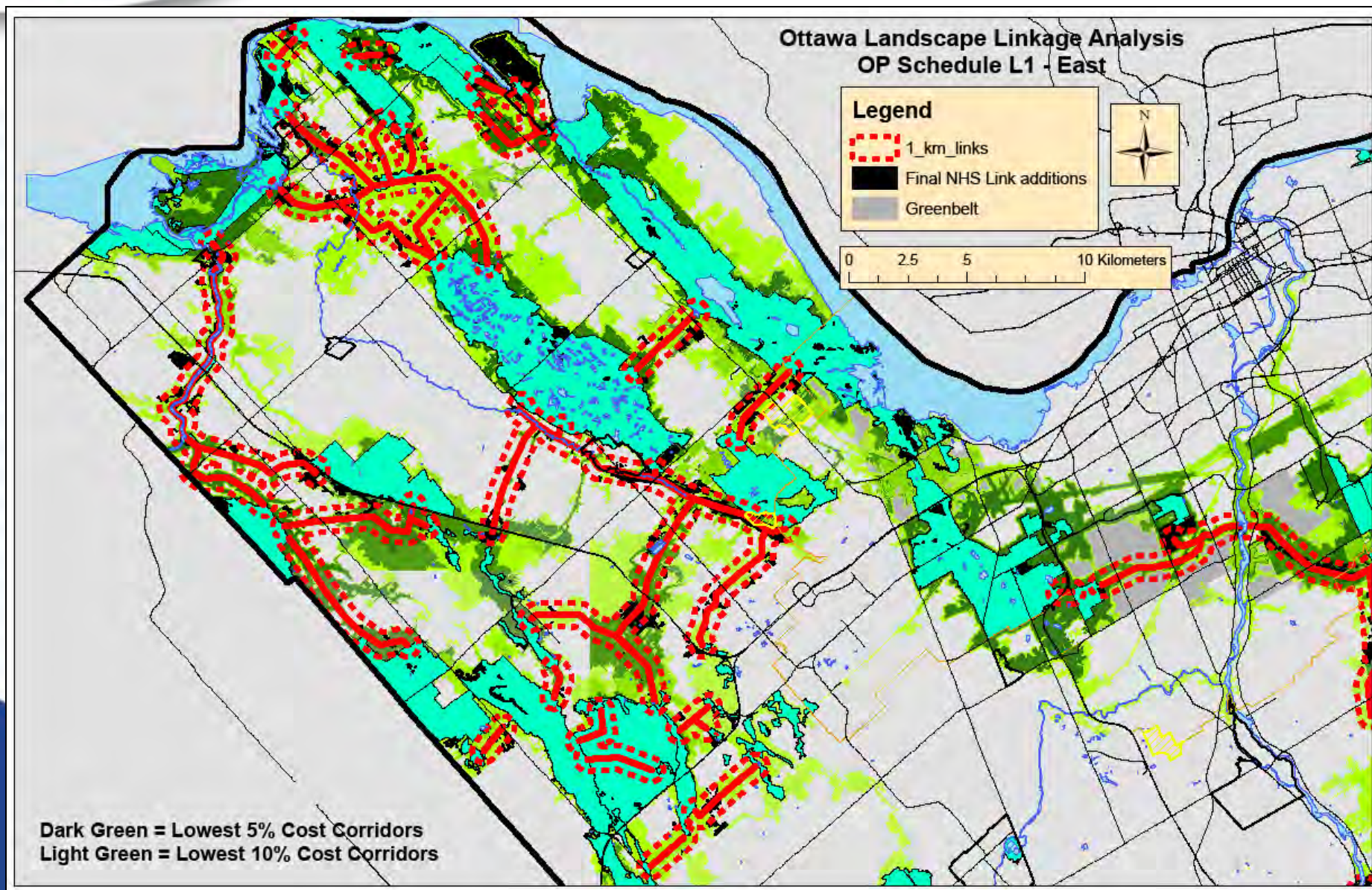




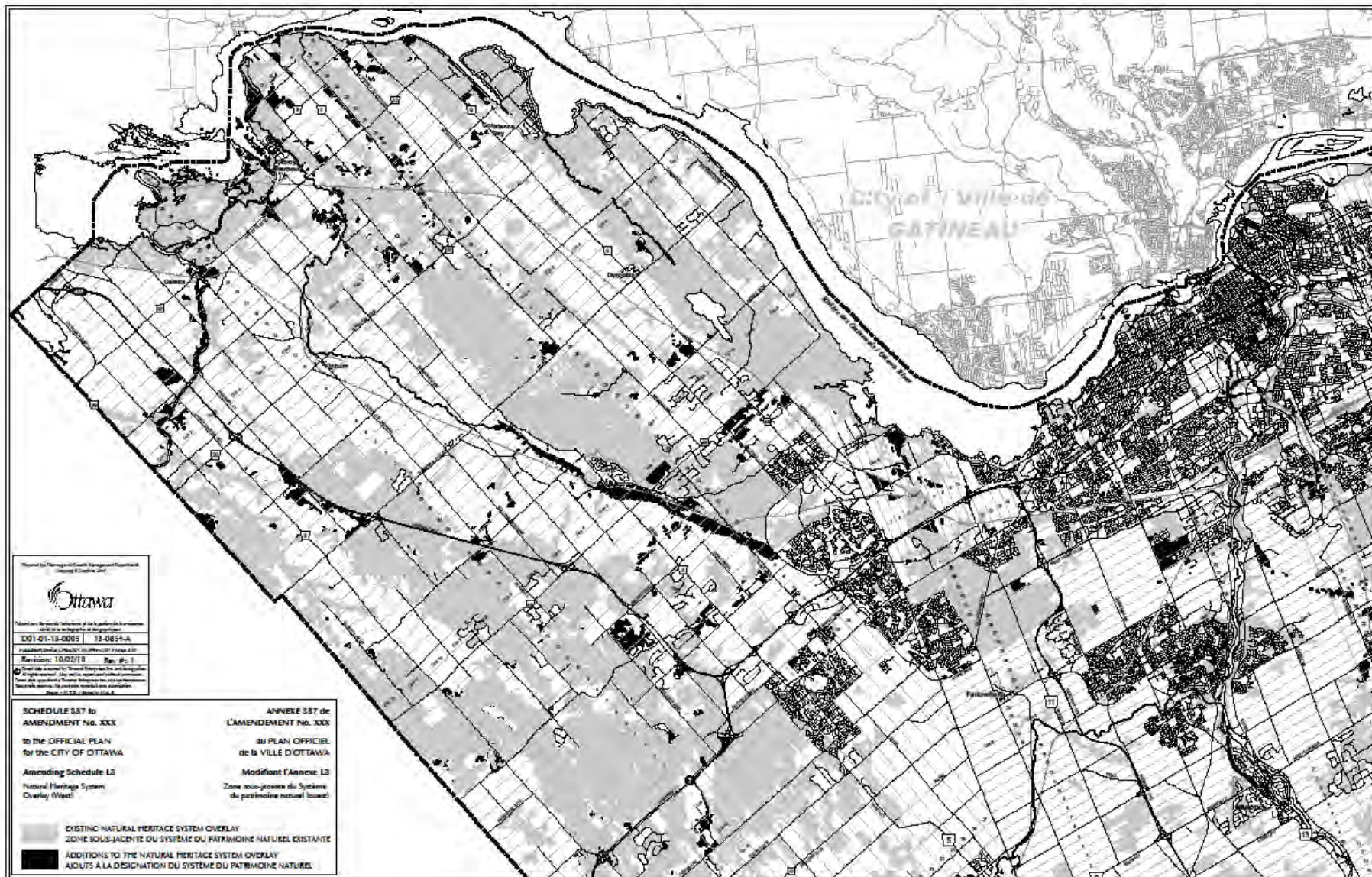
# Least Cost Corridor Network OP Schedule L3 - West



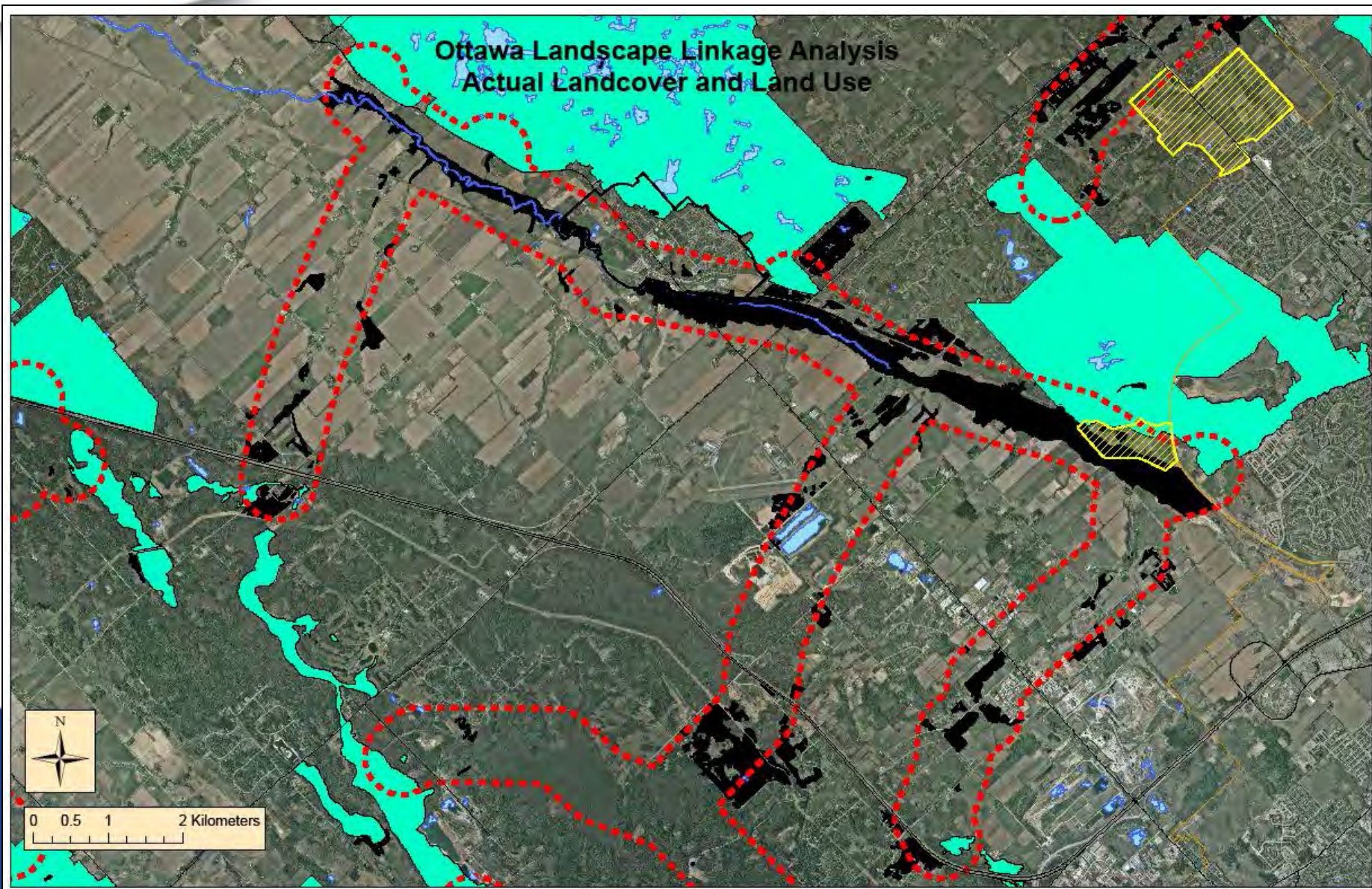








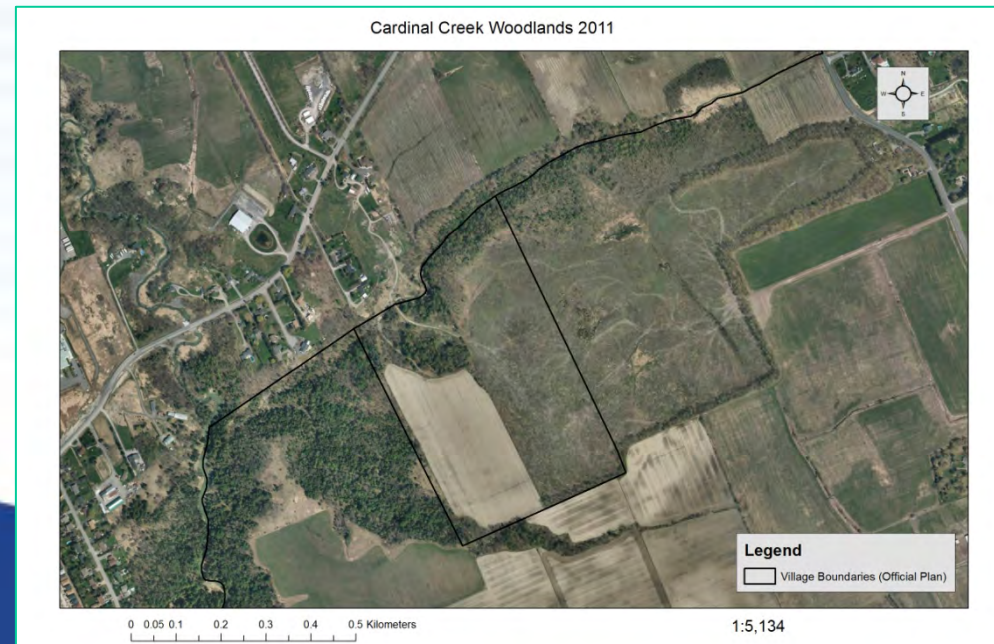






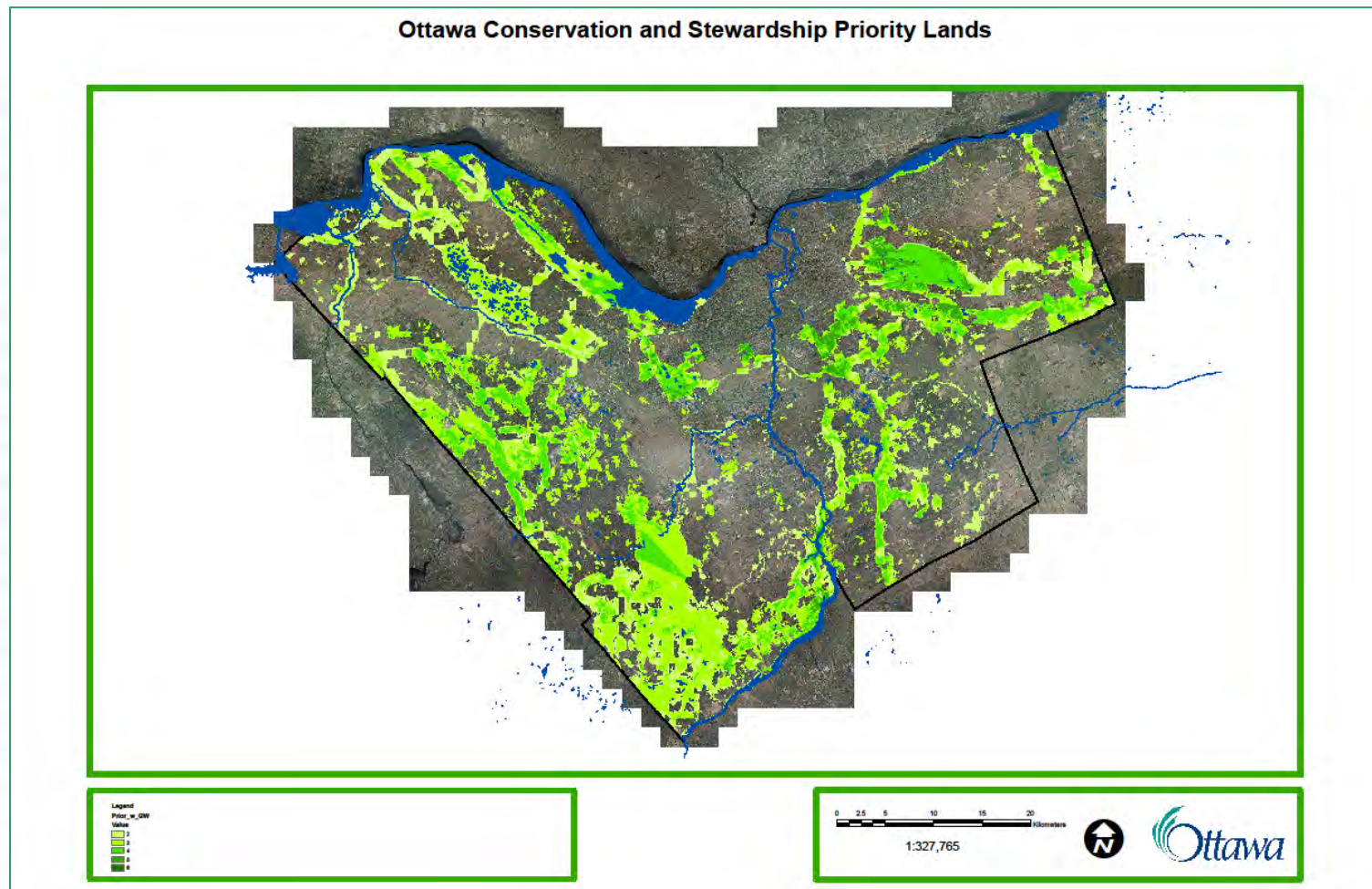
# Current Challenges

- Pre-emptive land clearing
- Clearing for agriculture
- Loss of unevaluated wetlands
- Emerald ash borer
- Loss of mature, urban trees
- Planting restrictions in new suburban communities
- Costs of acquisition



# Current Initiatives

- **Conservation and Stewardship Plan**
- **Urban Forest Management Plan**
- **Urban Natural Features Strategy**
- **Review of Significant Woodlands**
- **Sustainable funding review**





# Questions?

