

**Figure 3a**  
**Pre-Development**  
**Blandings' Turtle**  
**Habitat Categories**

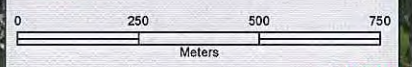
**Overall Benefit**  
**Permit Application**  
**KNL Developments**  
**Ottawa, ON**

OE-OT-015982 GIS 00258



COORDINATE SYSTEM:  
 LAMBERT CONFORMAL CONIC (LLC) PROJECTION  
 NAD 27 - SPHEROID CLAKE, 1866

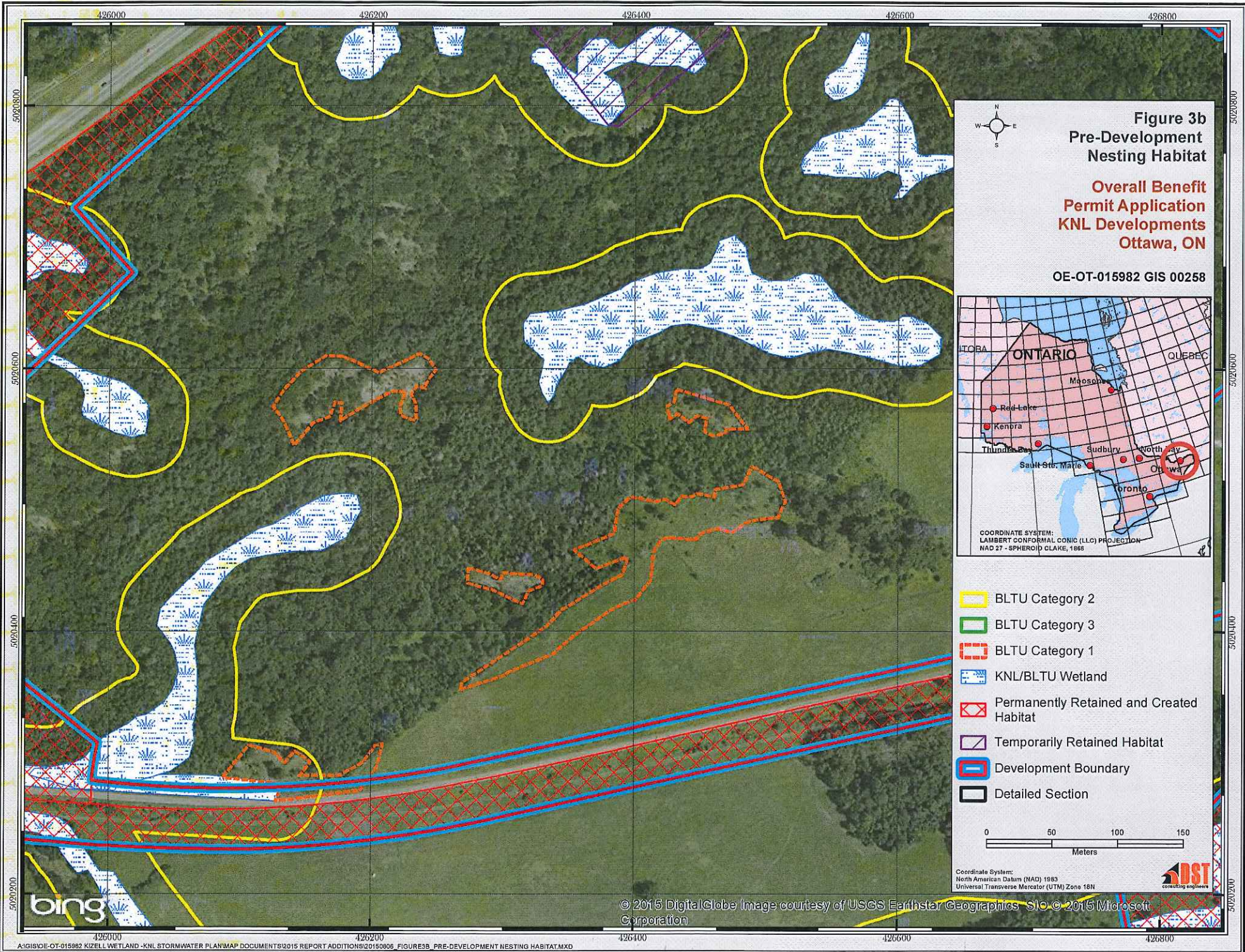
- 2013 Blandings Capture
- 2012 Blandings Capture
- 2011 Blandings Capture
- BLTU Category 1
- BLTU Category 2
- BLTU Category 3
- KNL / BLTU Wetland
- Development Boundary



Coordinate System:  
 North American Datum (NAD) 1983  
 Universal Transverse Mercator (UTM) Zone 18N



© 2015 DigitalGlobe. Image courtesy of USGS Earthstar Corporation



**Figure 3b**  
**Pre-Development**  
**Nesting Habitat**

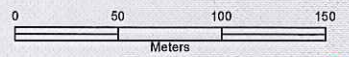
**Overall Benefit**  
**Permit Application**  
**KNL Developments**  
**Ottawa, ON**

OE-OT-015982 GIS 00258



COORDINATE SYSTEM:  
 LAMBERT CONFORMAL CONIC (LLC) PROJECTION  
 NAD 27 - SPHEROID CLAKE, 1868

- BLTU Category 2
- BLTU Category 3
- BLTU Category 1
- KNL/BLTU Wetland
- Permanently Retained and Created Habitat
- Temporarily Retained Habitat
- Development Boundary
- Detailed Section



Coordinate System:  
 North American Datum (NAD) 1983  
 Universal Transverse Mercator (UTM) Zone 18N



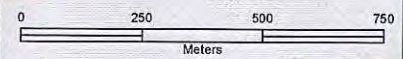


**Figure 4**  
**Site Plans with**  
**Pre-Development**  
**Blandings' Turtle**  
**Habitat Categories**

**Overall Benefit**  
**Permit Application**  
**KNL Developments**  
**Ottawa, ON**  
**OE-OT-015982 GIS 00258**



- 2013 Blandings Capture
- 2012 Blandings Capture
- 2011 Blandings Capture
- BLTU Category 1
- BLTU Category 2
- BLTU Category 3
- KNL/BLTU Wetland
- Wildlife Culvert Crossing
- Permanently Retained and Created Habitat
- Temporarily Retained Habitat
- Development Boundary



Coordinate System:  
 North American Datum (NAD) 1983  
 Universal Transverse Mercator (UTM) Zone 18N





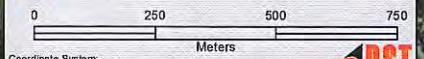
**Figure 5**  
**Site Plans with**  
**Post Development**  
**Habitat Map -**  
**Detailed Sections**

**Overall Benefit**  
**Permit Application**  
**KNL Developments**  
**Ottawa, ON**  
**OE-OT-015982 GIS 00258**



COORDINATE SYSTEM:  
 LAMBERT CONFORMAL CONIC (LLC) PROJECTION  
 NAD 27 - SPHEROID CLAKE, 1866

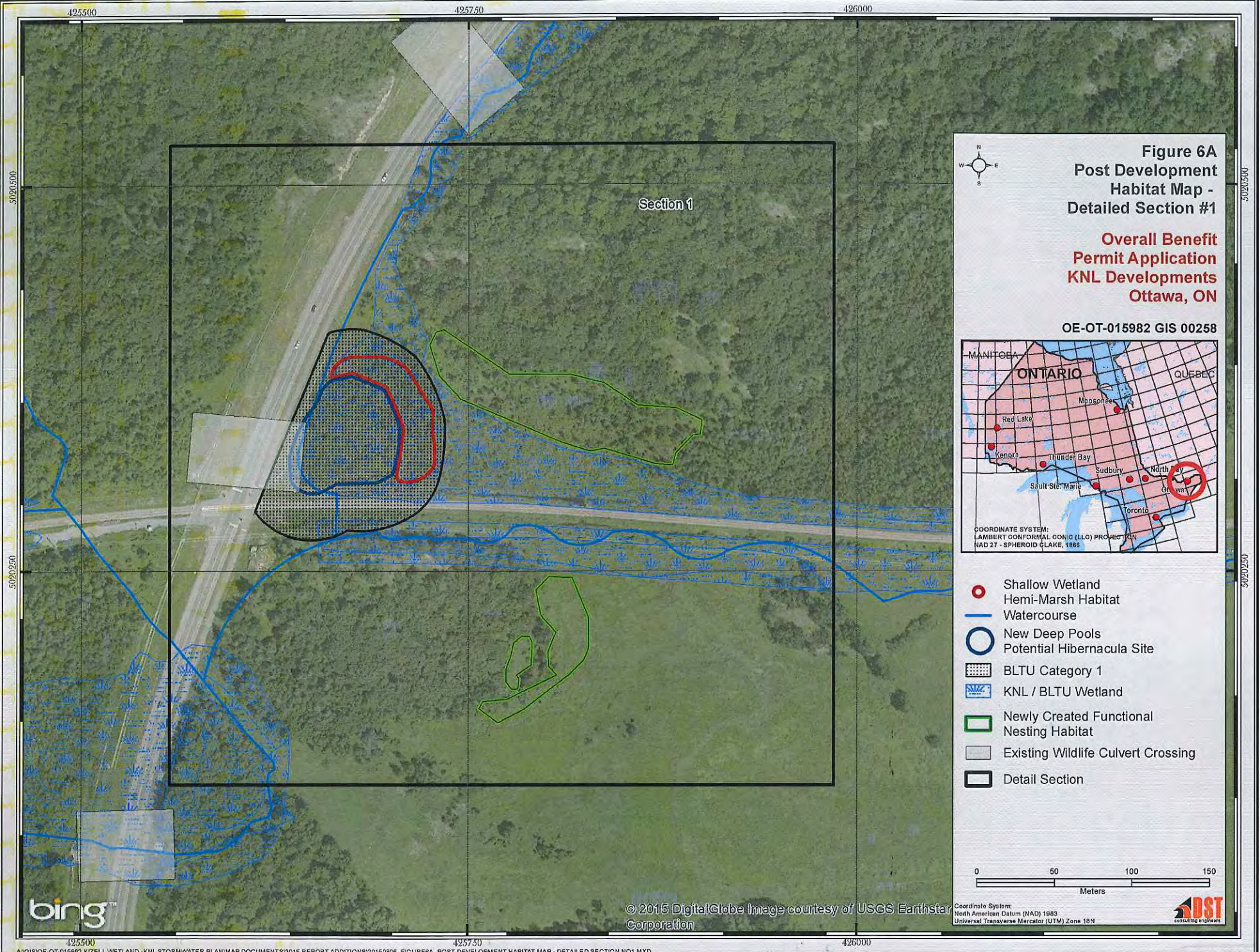
- 2013 Blandings Capture
- 2012 Blandings Capture
- 2011 Blandings Capture
- BLTU Category 1
- BLTU Category 2
- BLTU Category 3
- KNL/BLTU Wetland
- Wildlife Culvert Crossing
- Permanently Retained and Created Habitat
- Temporarily Retained Habitat
- Detail Section
- Development Boundary



Coordinate System:  
 North American Datum (NAD) 1983  
 Universal Transverse Mercator (UTM) Zone 18N



© 2015 DigitalGlobe, Image courtesy of USGS Earthstar Geographics, SIO © 2015 Microsoft Corporation



**Figure 6A**  
**Post Development**  
**Habitat Map -**  
**Detailed Section #1**

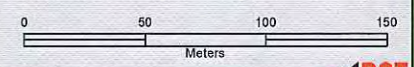
**Overall Benefit**  
**Permit Application**  
**KNL Developments**  
**Ottawa, ON**

OE-OT-015982 GIS 00258



COORDINATE SYSTEM:  
 LAMBERT CONFORMAL CONIC (LLC) PROJECTION  
 NAD 27 - SPHEROID CLAKE, 1866

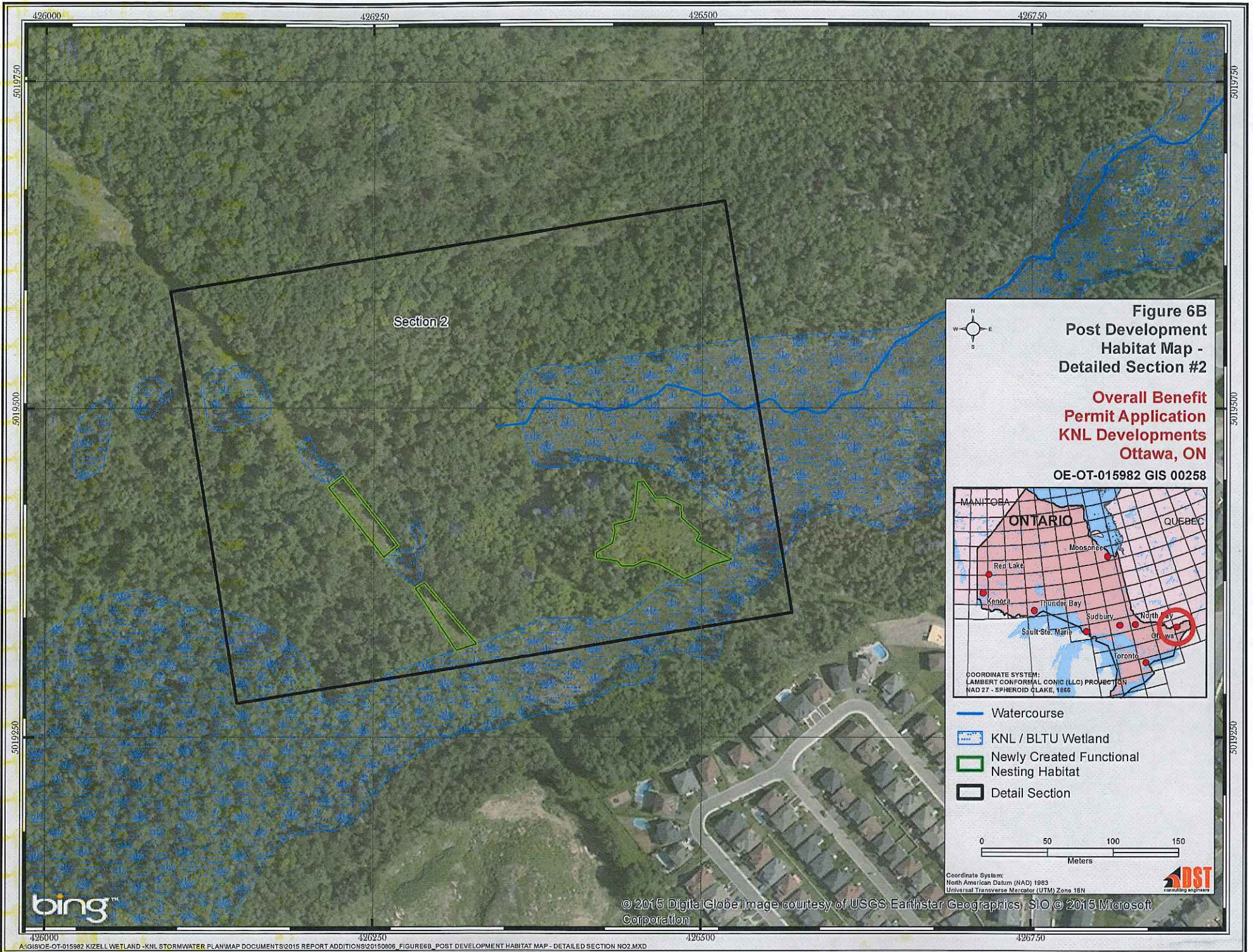
- Shallow Wetland
- Hemi-Marsh Habitat
- Watercourse
- New Deep Pools
- Potential Hibernacula Site
- BLTU Category 1
- KNL / BLTU Wetland
- Newly Created Functional Nesting Habitat
- Existing Wildlife Culvert Crossing
- Detail Section



Coordinate System:  
 North American Datum (NAD) 1983  
 Universal Transverse Mercator (UTM) Zone 18N



© 2015 DigitalGlobe Image courtesy of USGS Earthstar Corporation



Section 2







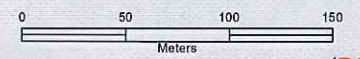
**Figure 6B**  
**Post Development**  
**Habitat Map -**  
**Detailed Section #2**

**Overall Benefit**  
**Permit Application**  
**KNL Developments**  
**Ottawa, ON**  
**OE-OT-015982 GIS 00258**



COORDINATE SYSTEM:  
 LAMBERT CONFORMAL CONIC (LLC) PROJECTION  
 NAD 27 - SPHEROID CLAKE, 1866

-  Watercourse
-  KNL / BLTU Wetland
-  Newly Created Functional Nesting Habitat
-  Detail Section



Coordinate System:  
 North American Datum (NAD) 1983  
 Universal Transverse Mercator (UTM) Zone 18N

