

FEDERAL LAND USE APPROVAL

MEMORIAL TO THE VICTIMS OF COMMUNISM : CANADA, A LAND OF REFUGE  
**GARDEN OF THE PROVINCES AND TERRITORIES**



**Board of Directors**

April 28<sup>th</sup>, 2016

Presentation by Stephen Willis  
*Executive Director, Capital Planning*

## PURPOSE OF THE PRESENTATION

To seek Federal Land Use Approval (FLUA) from the NCC Board of Directors to reserve a site west of the terraces of the Garden of the Provinces and Territories in Ottawa for the Memorial to the Victims of Communism – *Canada, a Land of Refuge*

## TABLE OF CONTENTS

01\_Roles and responsibilities  
02\_Background of the project  
03\_Site overview  
04\_Preliminary analysis

05\_Proposed site plan for approval  
06\_Results of public consultation  
07\_Schedule and next steps  
08\_Recommendations

## ROLES AND RESPONSIBILITIES

### **CANADIAN HERITAGE (PCH)** (since 2013)

- Leads the creation of commemorative monuments in the Capital
- Leads public and stakeholder consultations
- Coordinates the design competition and jury review

### **NCC**

- Prepares urban design guidelines
- Oversees the design development and implementation
- Approves land use and design

### **TRIBUTE TO LIBERTY**

- Memorial proponent
- Fundraising
- Member of steering committee

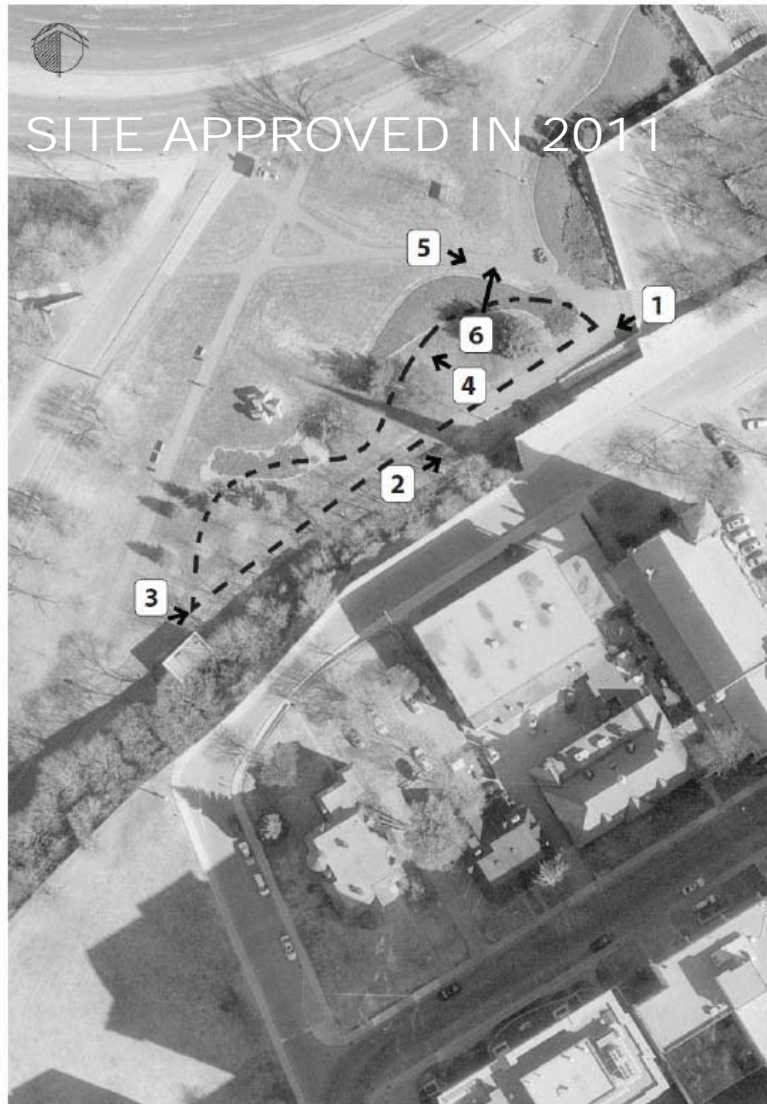
## BACKGROUND

- **September 2009:** Subject approval granted by the NCC.
- **June 2011:** NCC granted FLUA for a site near the terraces of the Garden of the Provinces and Territories.
- **March 2013:** Public Services and Procurement Canada (PSPC) requests that the NCC authorize the commemoration southwest of the Supreme Court of Canada.
- **November 2013:** PCH assumes leadership of national commemorations.  
NCC grants FLUA for a site southwest of the Supreme Court of Canada.
- **June 2015:** Following a request from PCH and PSPC, the NCC permits advance decontamination work for the site southwest of the Supreme Court.
- **January 2016:** PCH withdraws requests for NCC approvals for land-use and decontamination work for the site. PCH requests that the NCC consider authorizing the memorial at the Garden of the Provinces and Territories at an exact location to be determined.
- **February 2016:** PCH launches a web-based public consultation to solicit the input of Canadians.
- **March 2016:** A proposed site is presented to ACPDR for feedback.

## PLANNING CONTEXT







view | vue 1



view | vue 2



view | vue 3



view | vue 4



view | vue 5



view | vue 6

Exact site boundaries were to be refined through the development of Urban Design Guidelines.

## HISTORICAL CONTEXT

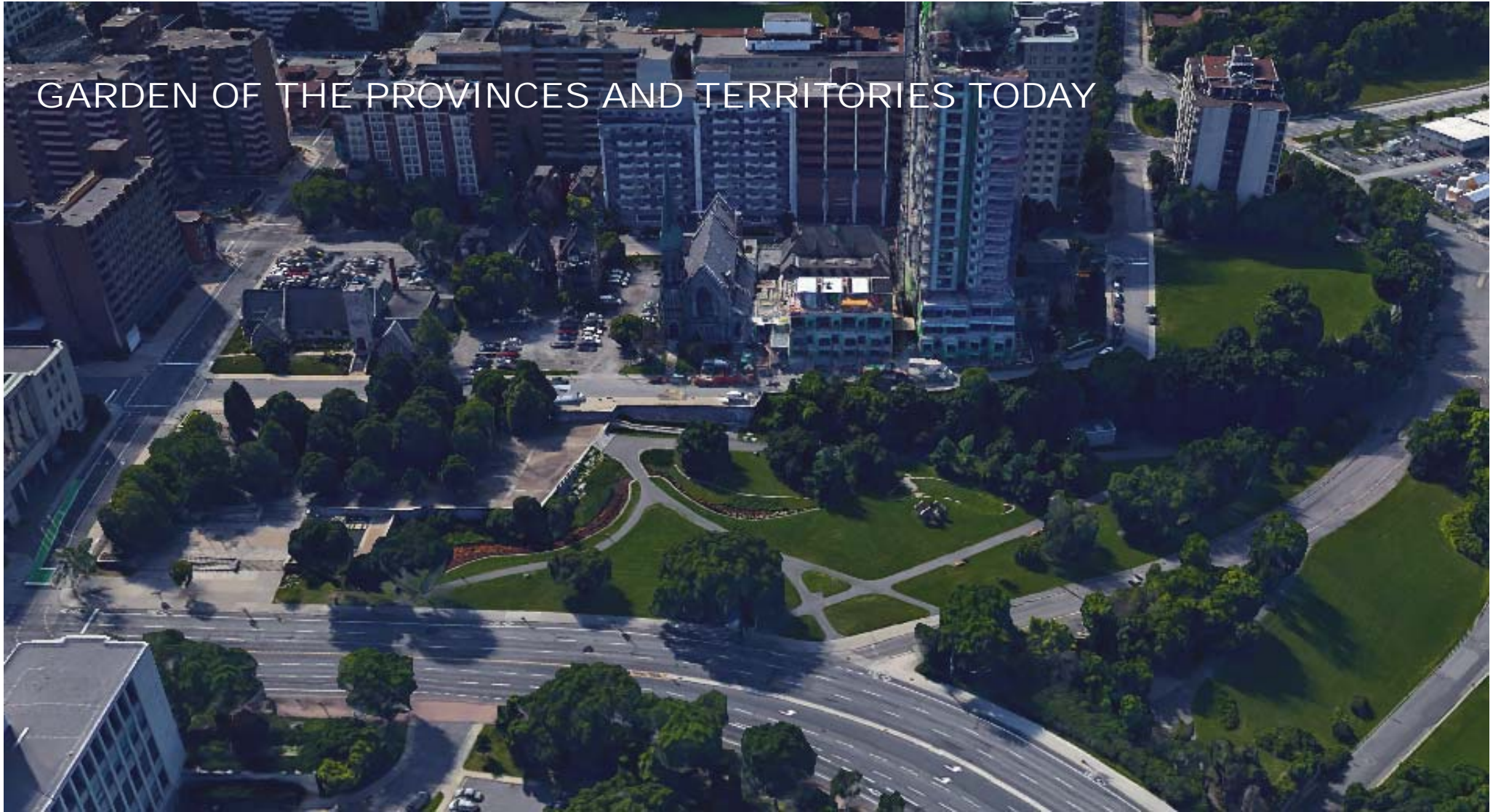


*Unveiling of the Garden by The Right Hon. J. Diefenbaker*



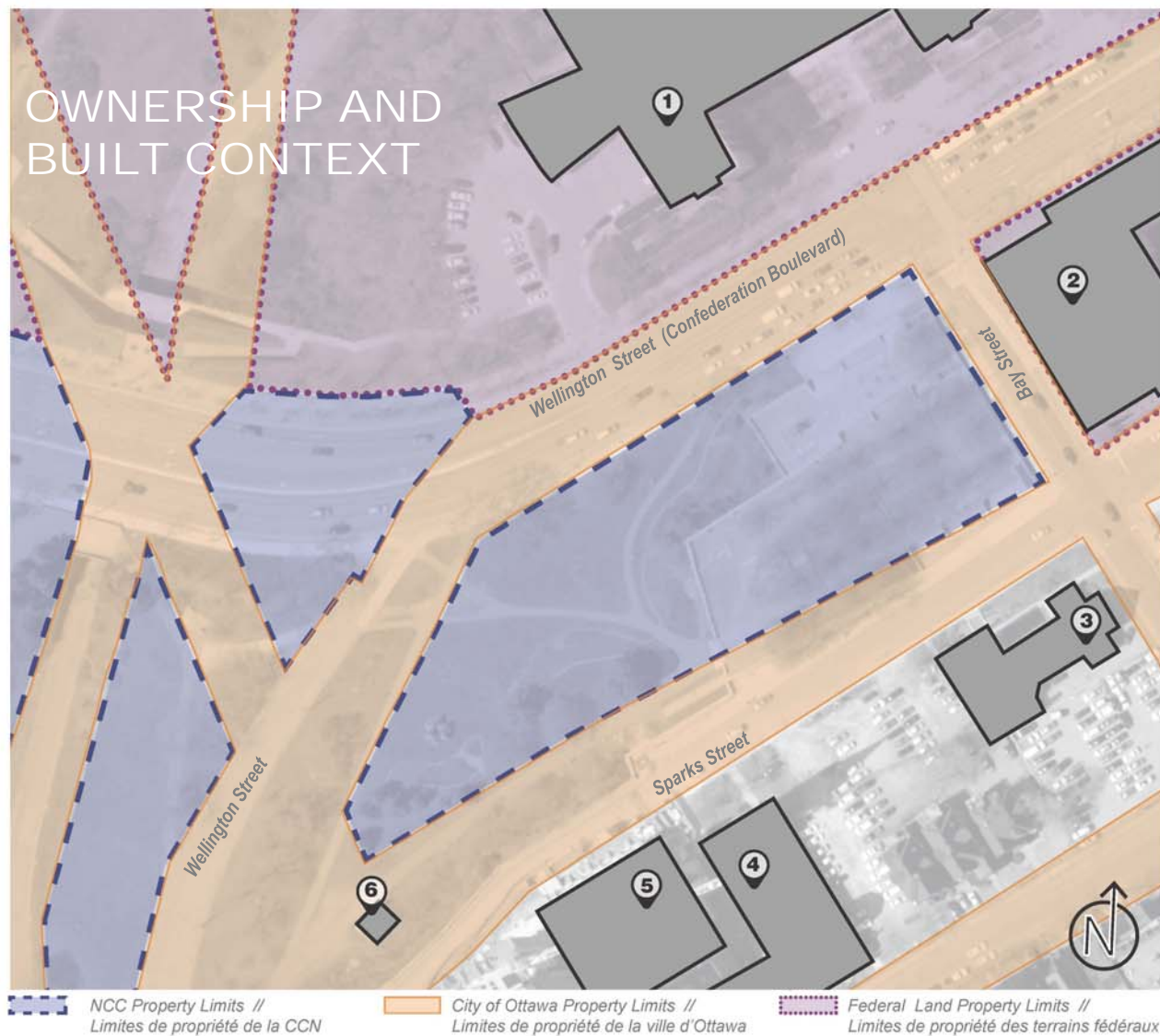


# GARDEN OF THE PROVINCES AND TERRITORIES TODAY



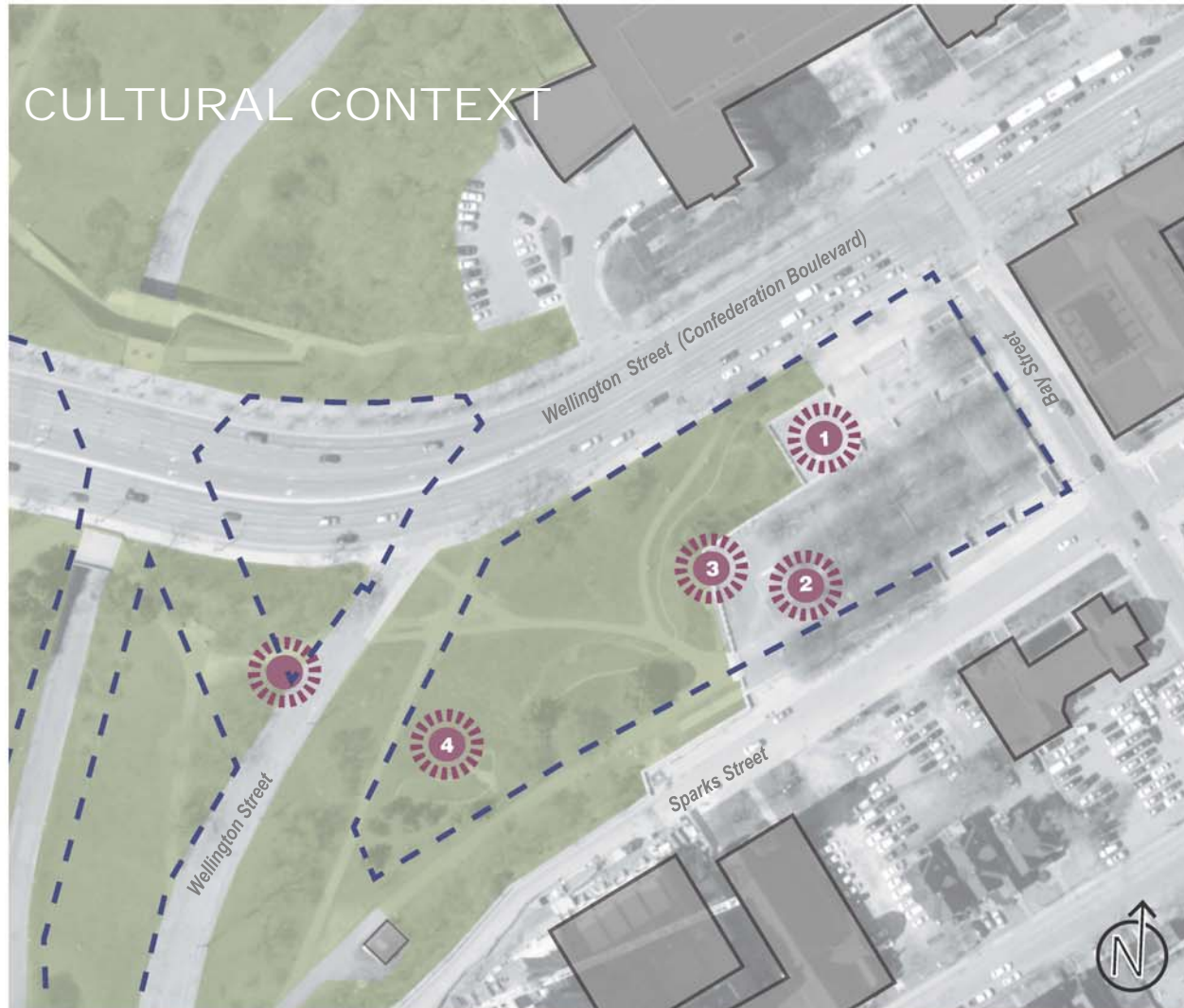


# OWNERSHIP AND BUILT CONTEXT





# CULTURAL CONTEXT

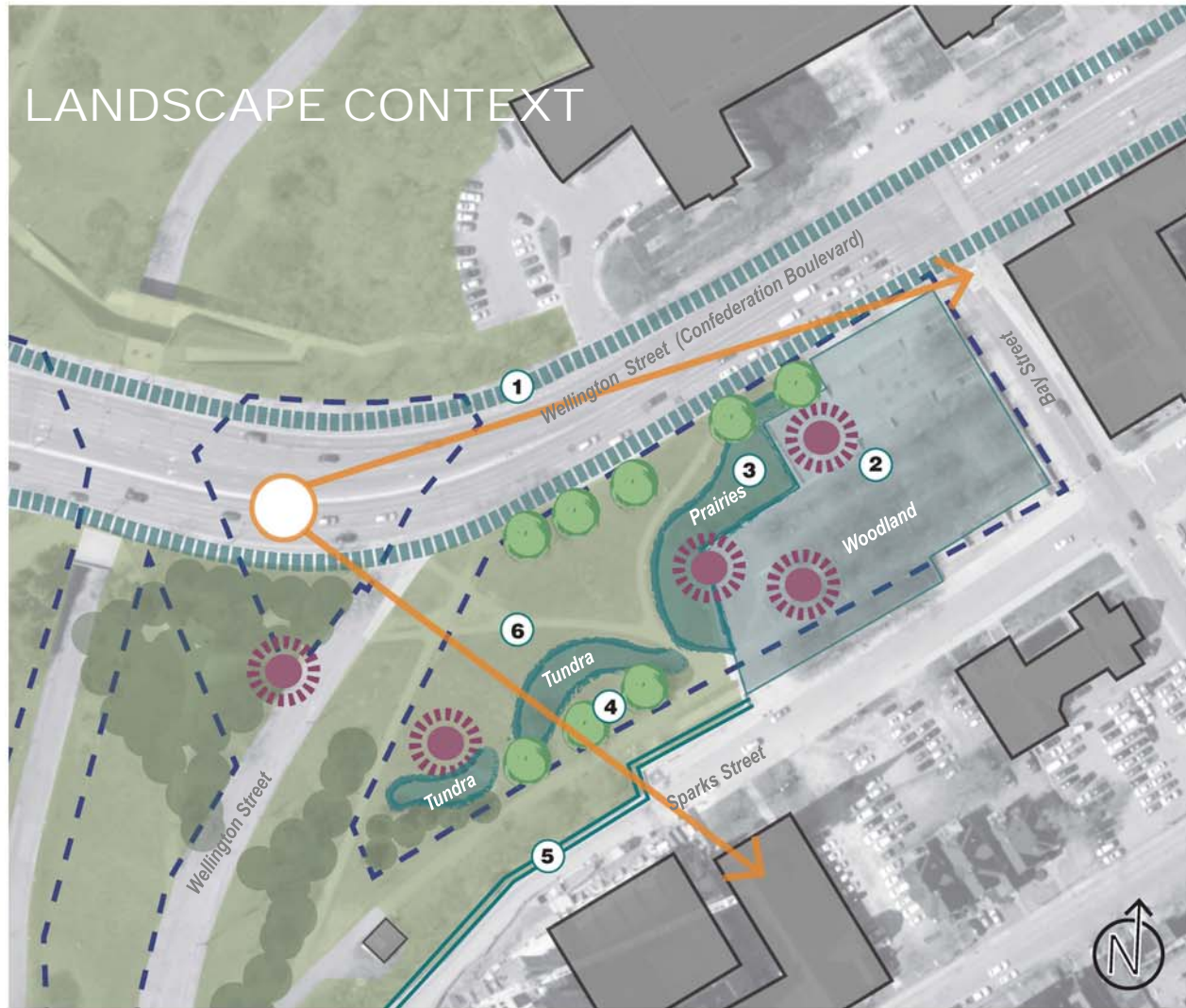


--- NCC Property Limits // Limites de propriété de la CCN





# LANDSCAPE CONTEXT



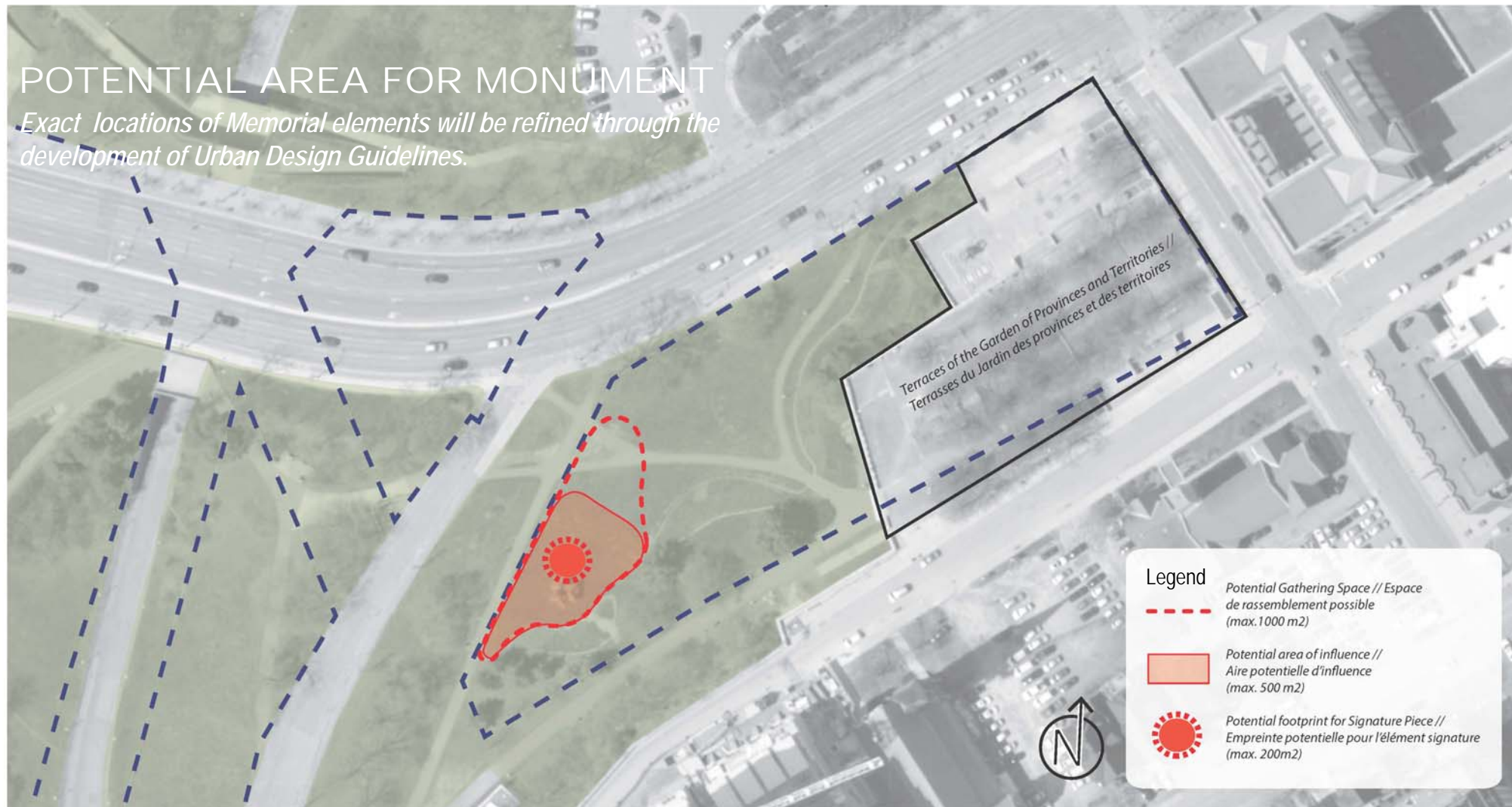
--- NCC Property Limits // Limites de propriété de la CCN





# POTENTIAL AREA FOR MONUMENT

*Exact locations of Memorial elements will be refined through the development of Urban Design Guidelines.*



--- NCC Property Limits // Limites de propriété de la CCN



## TWELVE POINTS IN A CLASSICAL BALANCE



**Chung Hung**, Vancouver  
1981  
*Red Cedar, 6.7m x 6m x 3.6 m*



Canadian  
Heritage

Patrimoine  
canadien

## On-line Survey Results

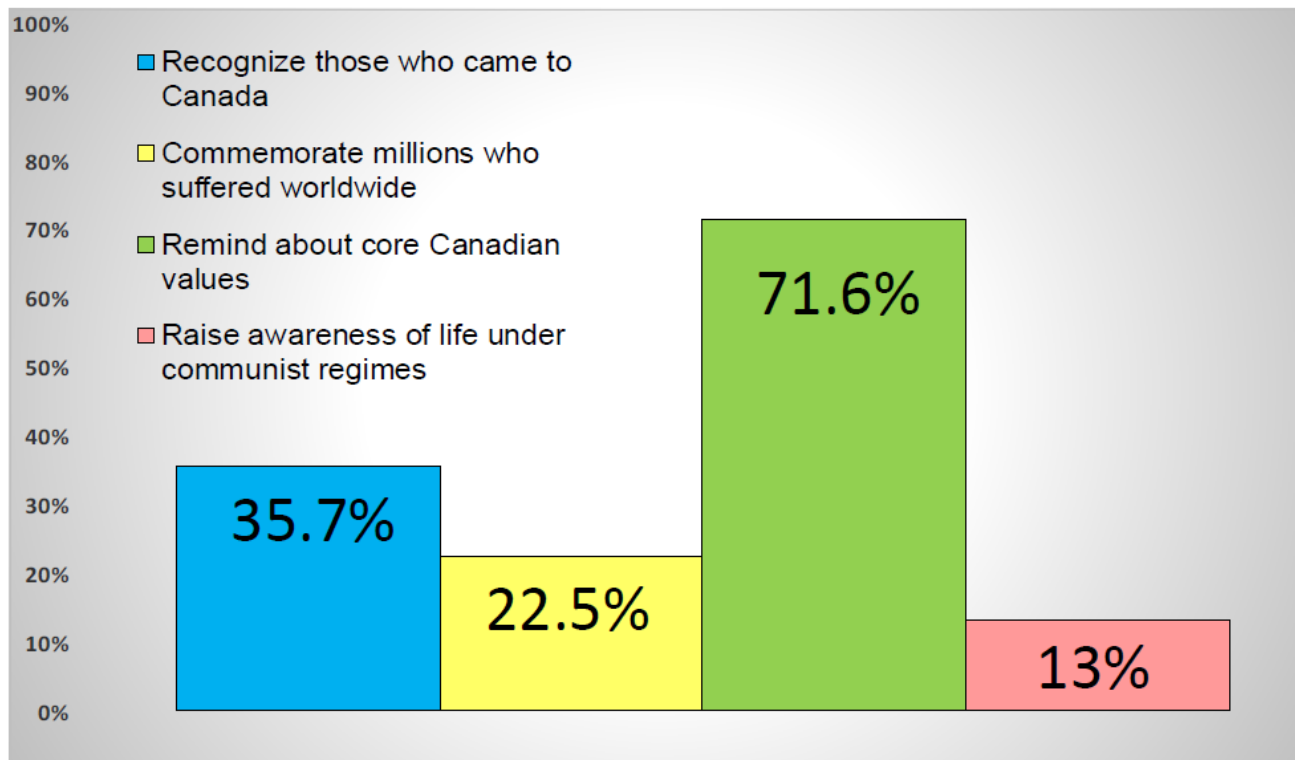
- Over 8,500 people took part in the survey
- Participation from every province and territory
- Over half of respondents (52.9%) live outside the National Capital Region



Canadian  
Heritage

Patrimoine  
canadien

## Results of Question 1 Monument Objectives



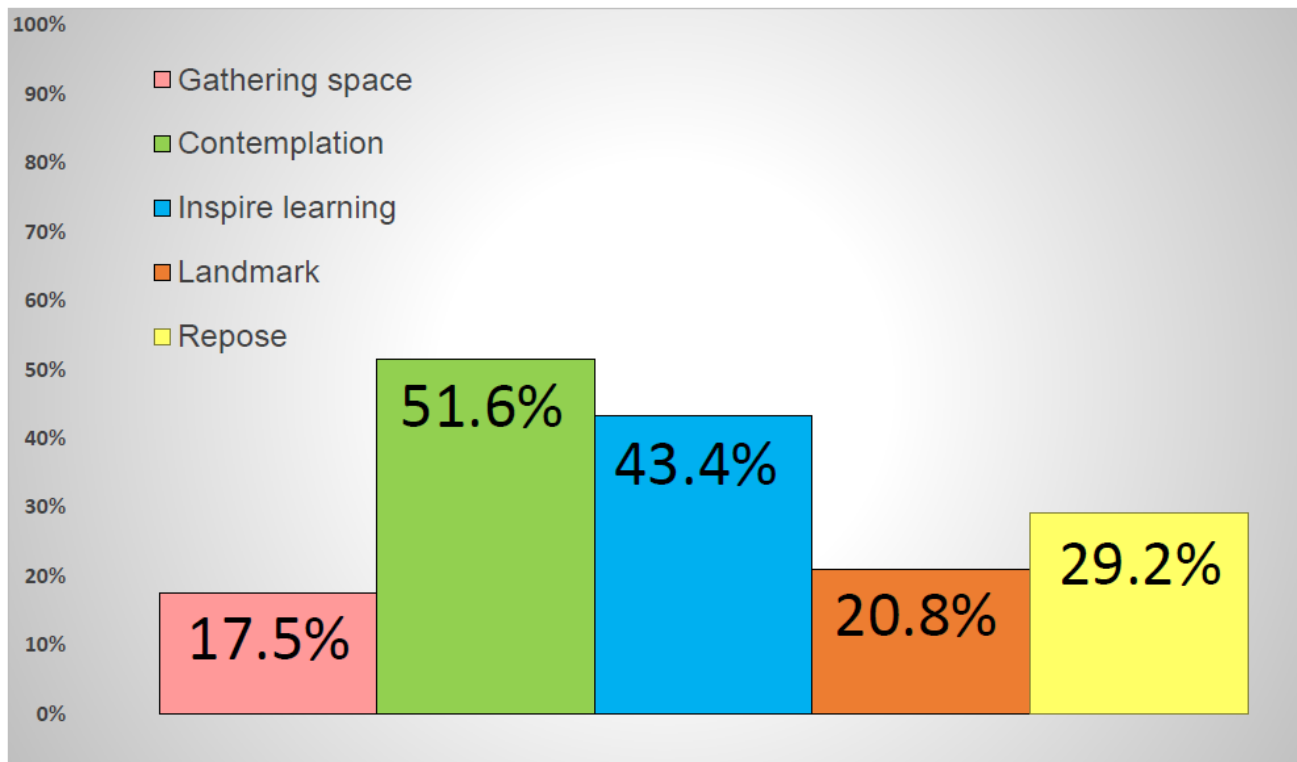


Canadian  
Heritage

Patrimoine  
canadien

## Results of Question 2

### Visitor Experience



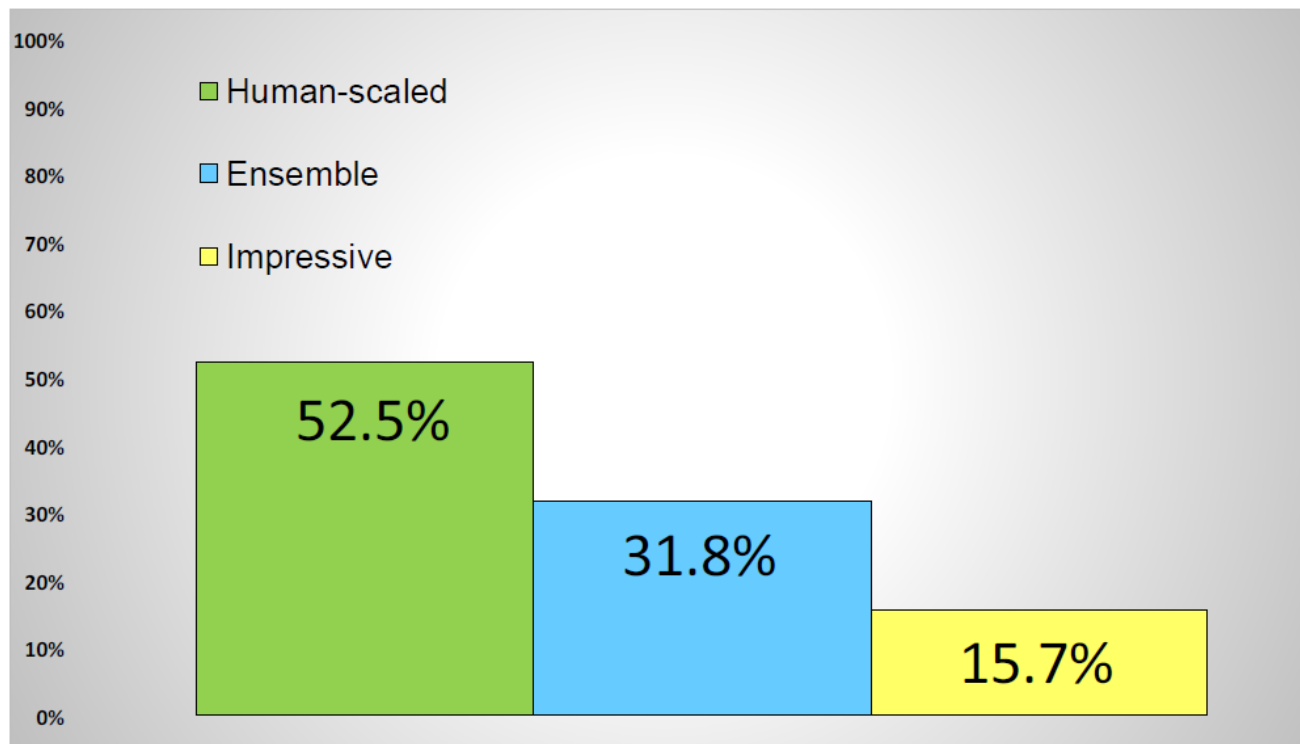


Canadian  
Heritage

Patrimoine  
canadien

## Results of Question 3

### Approach to Memorial Scale







Canadian  
Heritage

Patrimoine  
canadien

## Results of Question 4

### Open-ended question

Comment category (up to 3 per response)	Incidence
Makes a suggestion with respect to the Memorial name/theme	168
Expresses concerns about the Memorial purpose	144
Requests that Memorial project be cancelled	139
Comments about the design of the Memorial	96
Suggests other type of monument be built	91
Expresses concerns about use of federal funding for the Memorial	88
Comments about the scale/size of the Memorial	53
Comments about location of the Memorial	51
Other	37
Expresses support for the Memorial project	25
Expresses concerns about the survey/consultation itself	9
Total for sample of 504 respondents	901

## PROPOSED SCHEDULE / NEXT STEPS

- **Spring 2016:** Multi-Party Project Agreement
- **Summer 2016:** NCC leads preparation of Urban Design Guidelines with presentation to ACPDR followed by revision and approval by the Board of Directors
- **Mid-2016 to Spring 2017:** PCH leads design competition, concept development and public consultation
- **Spring to Fall 2017:** Design development with presentations to ACPDR and Board of Directors
- **Late 2017:** Development of tender package, Submission to Board of Directors for Federal Design Approval
- **2018:** Fabrication, installation and unveiling

## RECOMMENDATIONS TO THE BOARD (1/2)

THAT a Federal Land Use Approval be granted to reserve a site located west of the terraces of the Garden of the Provinces and Territories as identified in Appendix 1 for the proposed commemoration “Memorial to the Victims of Communism – *Canada, A Land of Refuge*” for a period of four years, subject to the following conditions:

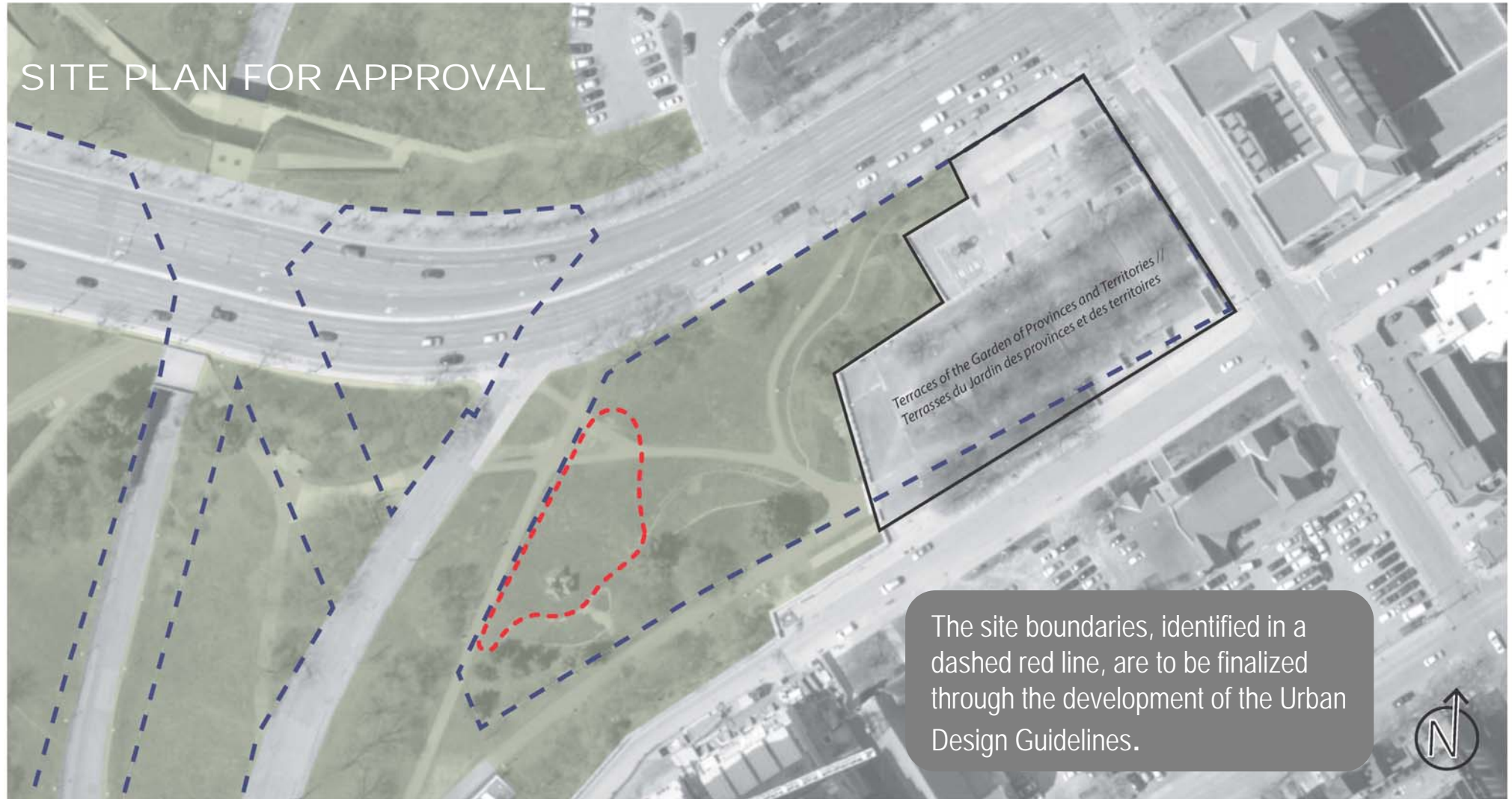
- The proposed commemoration must follow all requirements to be defined by the Urban Design Guidelines currently under development by the NCC;
- No works related to the installation of the proposed commemoration will be permitted until a separate Federal Design Approval for final design, once developed, has been granted;
- The location of the proposed commemoration must maintain an appropriate visual separation from the terraces of the Garden of the Provinces and Territories;

## RECOMMENDATIONS TO THE BOARD (2/2)

- The proposed commemoration must employ high quality materials and demonstrate excellence in landscape architecture as integral components of its design; and
- The art installation known as Twelve Points in a Classical Balance must be sensitively and appropriately relocated prior to the installation of the proposed commemoration.

THAT the preparation and signature of the Federal Land Use Approval document associated with this submission be delegated to the Executive Director, Capital Planning Branch.

## SITE PLAN FOR APPROVAL



The site boundaries, identified in a dashed red line, are to be finalized through the development of the Urban Design Guidelines.

--- NCC Property Limits // Limites de propriété de la CCN