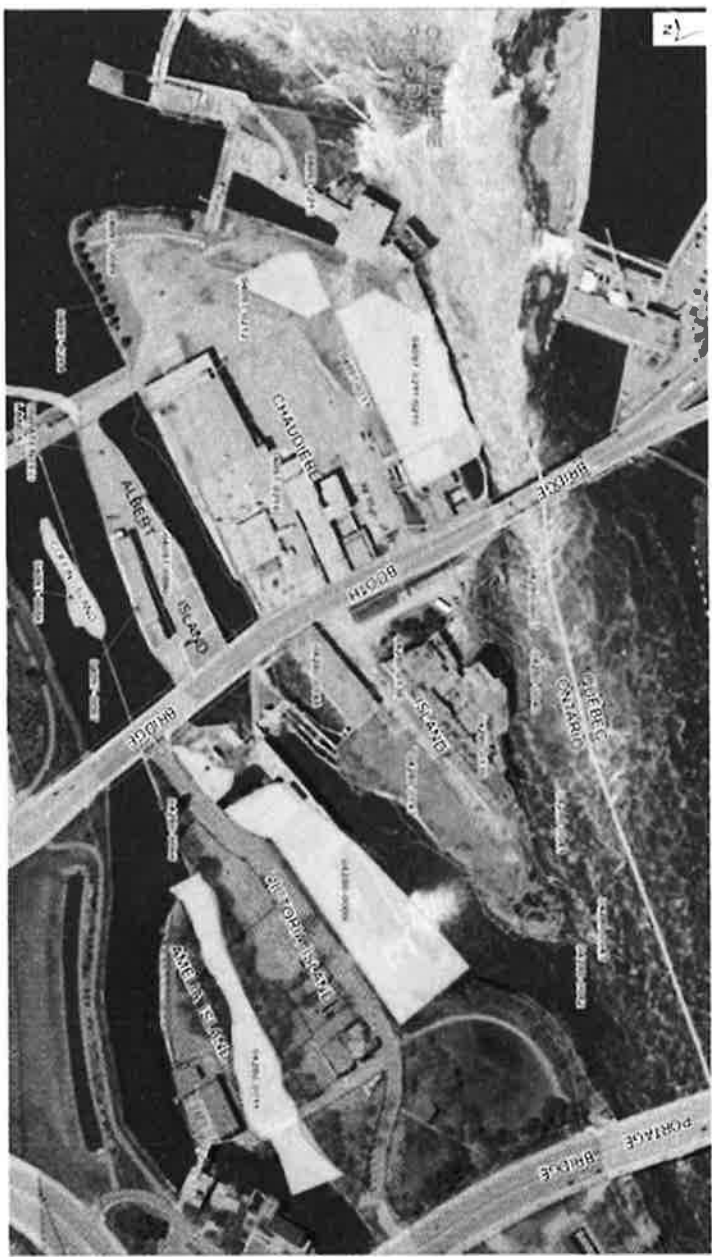
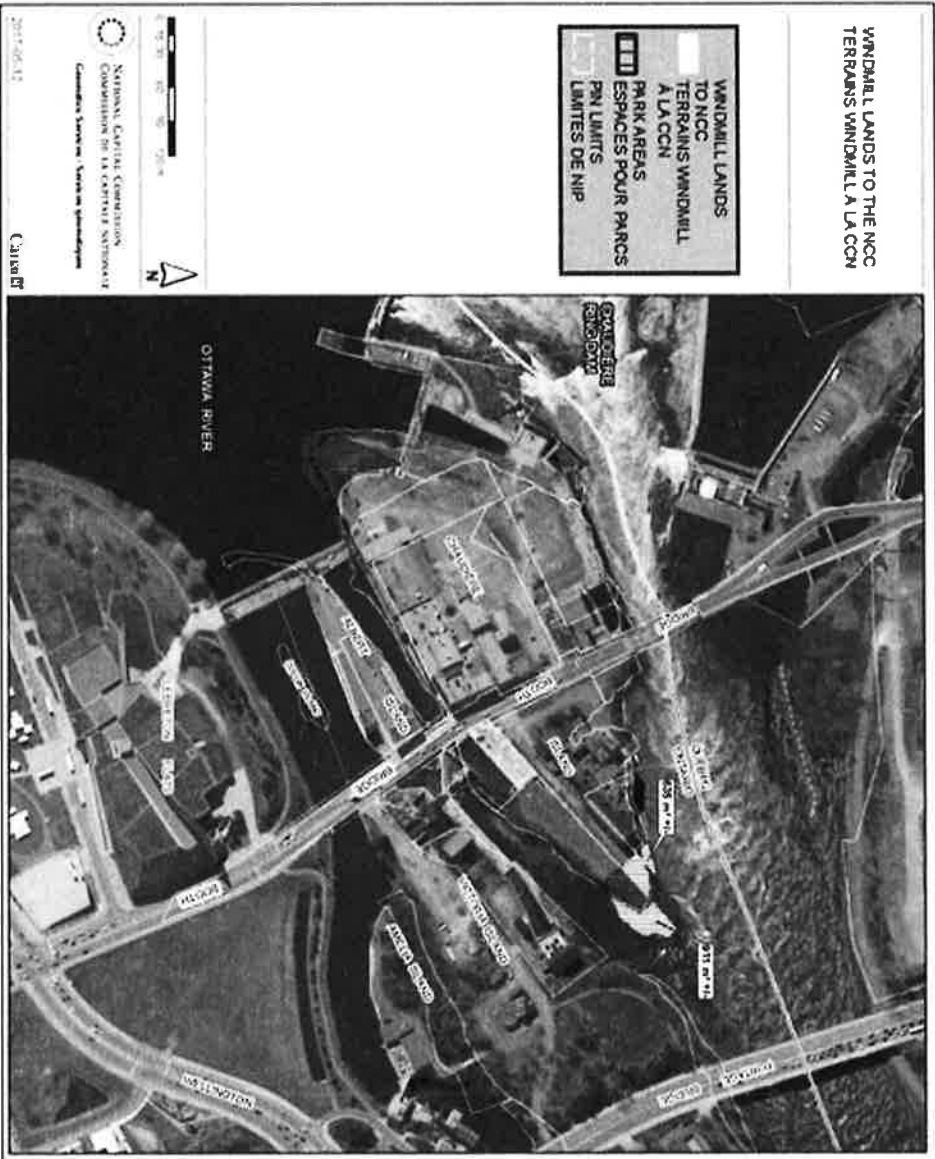


SCHEDULE "B" - SKETCH OF PUBLIC WORKS AND GOVERNMENT SERVICES CANADA PROPERTIES TO BE ACQUIRED BY THE NATIONAL CAPITAL COMMISSION (22,100 square metres)

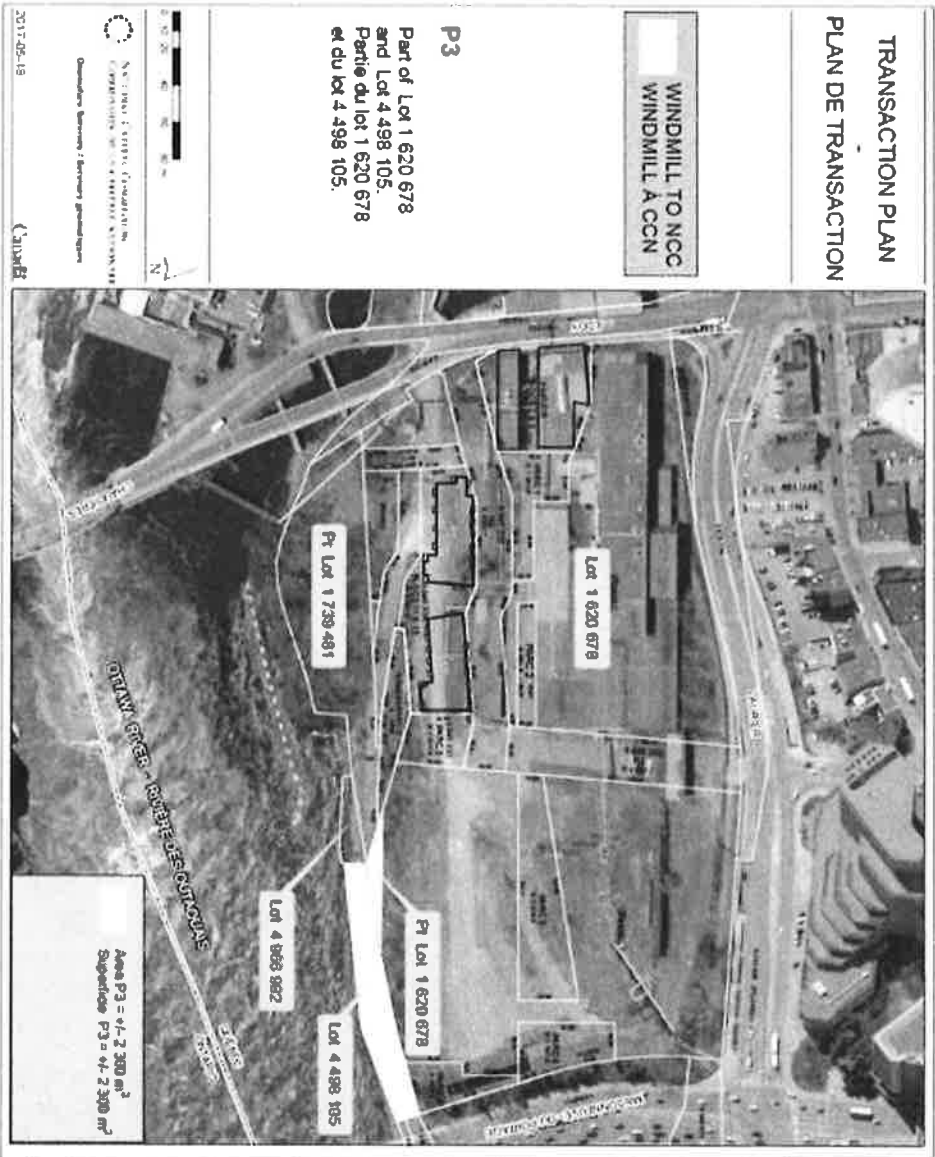
CROWN LANDS TO NCC



SCHEDULE "D" - SKETCH OF WINDMILL DREAM ZIBI MASTER LP, BY ITS GENERAL PARTNER, WINDMILL DREAM LIMITED PARTNERSHIP, BY ITS GENERAL PARTNER, EB EDDY SUSTAINABLE REVITALIZATION INC. PROPERTIES TO BE ACQUIRED BY THE NATIONAL CAPITAL COMMISSION (1,546 square metres)



SCHEDULE "E" - SKETCH OF WINDMILL DREAM ZIBI MASTER LP, BY ITS GENERAL PARTNER, WINDMILL DREAM LIMITED PARTNERSHIP, BY ITS GENERAL PARTNER, EB EDDY SUSTAINABLE REVITALIZATION INC. PROPERTIES TO BE ACQUIRED BY THE NATIONAL CAPITAL COMMISSION (2,300 square metres)



SCHEDULE "F" - SKETCH OF WINDMILL DREAM ZIBI MASTER LP, BY ITS GENERAL PARTNER, WINDMILL DREAM LIMITED PARTNERSHIP, BY ITS GENERAL PARTNER, EB EDDY SUSTAINABLE REVITALIZATION INC. PROPERTIES TO BE ACQUIRED BY THE NATIONAL CAPITAL COMMISSION (880 square metres)

WINDMILL TO NCC / WINDMILL À CCN

P1 : Pt Lot 1 739 481



NATIONAL CAPITAL COMMISSION
 COMMISSION DE LA CAPITALE NATIONALE
 Géomatics Services / Services géomatiques

2017-09-14



Area P1 = +/- 880 m²
 Superficie P1 = +/- 880 m²

SCHEDULE "G" - SKETCH OF THE NATIONAL CAPITAL COMMISSION PROPERTIES TO BE DISPOSED TO WINDMILL DREAM ZIBI MASTER LP, BY ITS GENERAL PARTNER, WINDMILL DREAM LIMITED PARTNERSHIP, BY ITS GENERAL PARTNER, EB EDDY SUSTAINABLE REVITALIZATION INC. (The Islands) (18,798 square metres)



SCHEDULE "H" - SKETCH OF THE NATIONAL CAPITAL COMMISSION PROPERTIES TO BE DISPOSED TO WINDMILL DREAM ZIBI MASTER LP, BY ITS GENERAL PARTNER, WINDMILL DREAM LIMITED PARTNERSHIP, BY ITS GENERAL PARTNER, EB EDDY SUSTAINABLE REVITALIZATION INC. (Gatineau) (3,400 square metres)



SCHEDULE "I" - SKETCH OF THE PROPERTIES OVER WHICH A SANITARY SEWER EASEMENT IS TO BE GRANTED BY THE NATIONAL CAPITAL COMMISSION (3,451 square metres)

SCHEDULE "I" - 2011

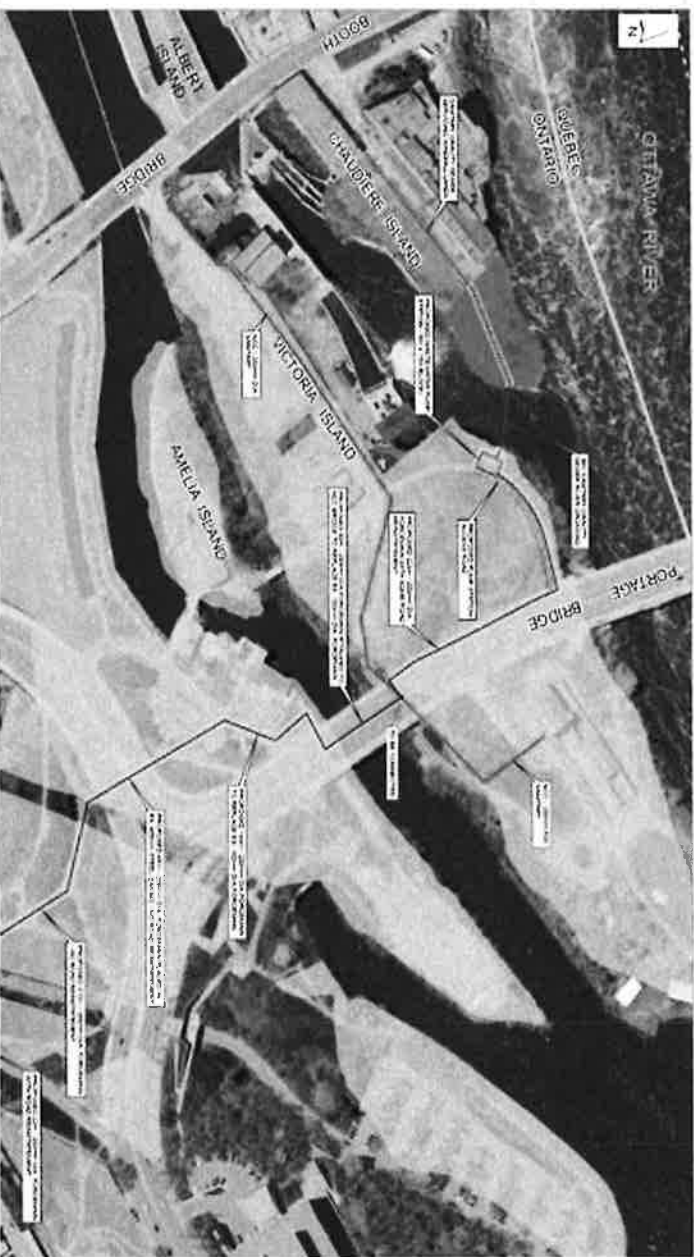
PERMANENT SANITARY EASEMENT

2101 Phase 1 - Ottawa, ON

- PROPOSED EASEMENT
- EXISTING EASEMENT
- PROPOSED EASEMENT
- EXISTING EASEMENT

- SERVICES:
- FOUR-EMMAN
 - SANITARY
 - PUMP STATION
 - SEWER STATION
 - ACCESS ROAD
 - NOE SANITARY

NOTES:
 1. THE EASEMENT IS TO BE GRANTED BY THE NATIONAL CAPITAL COMMISSION (NCC) TO THE NATIONAL CAPITAL COMMISSION (NCC) FOR THE PURPOSES OF THE NATIONAL CAPITAL COMMISSION (NCC) ACT, 1985 (S.C. 30) AND THE NATIONAL CAPITAL COMMISSION (NCC) REGULATIONS, 1985 (S.O. 101/85).



SCHEDULE "J" - SKETCH OF THE PROPERTIES OVER WHICH A WATERMAIN EASEMENT IS TO BE GRANTED BY THE NATIONAL CAPITAL COMMISSION (3,235 square metres)

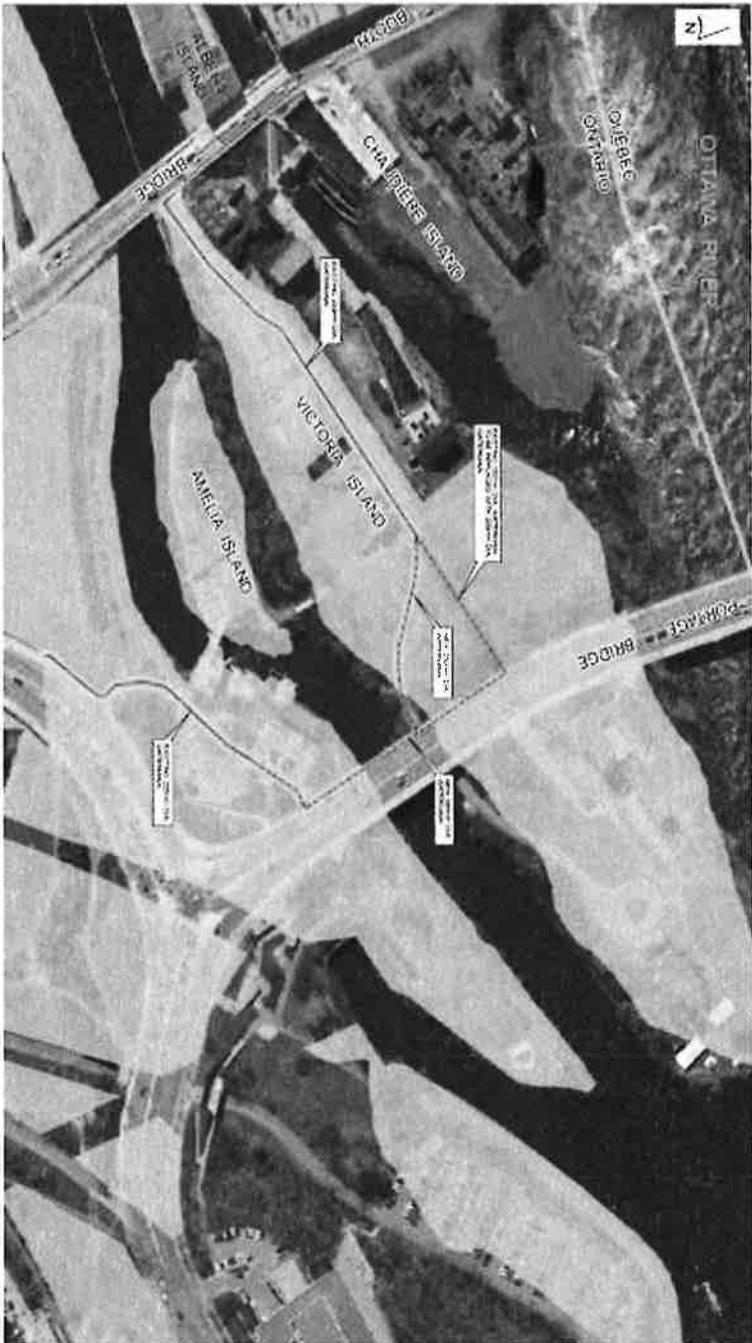
SCHEDULE "J"

PERMANENT WATERMAIN EASEMENT

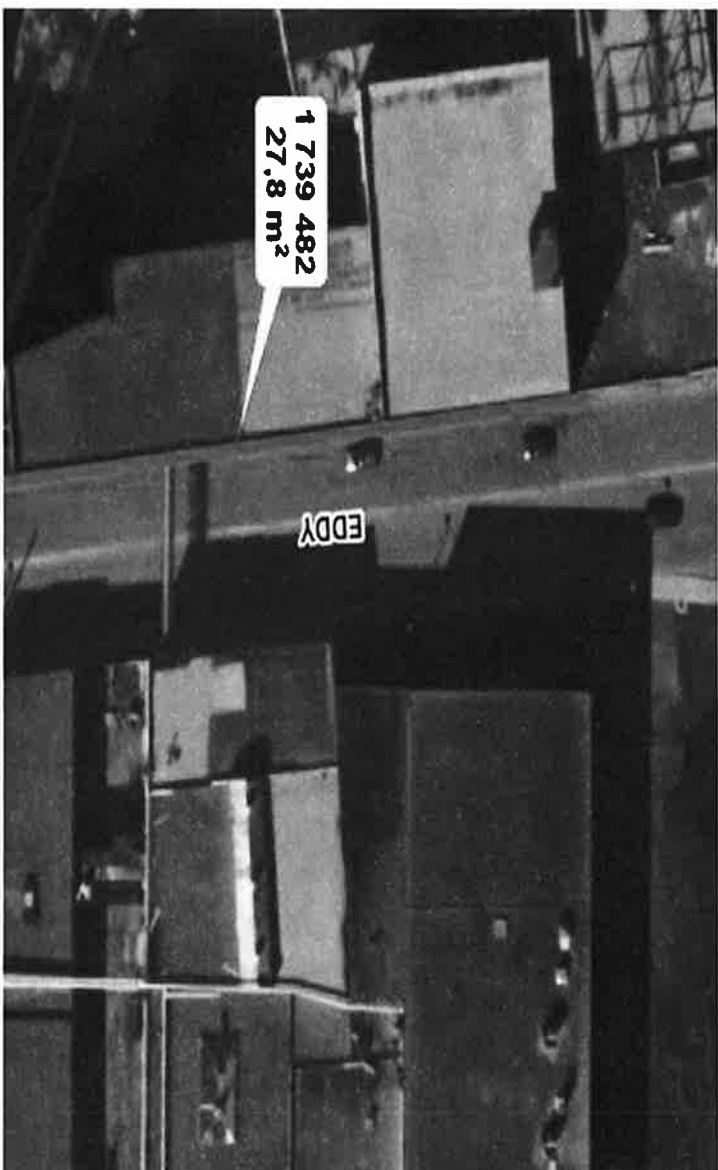
ZIMJ PHASE 1 - OTTAWA, ON

- PROPOSED BANKS
- NOT PROPERTY
- EASEMENT CORRIDOR
- EXISTING WATERMAIN
- NEW WATERMAIN

NOTE:
 1. THIS PLAN IS A SKETCH OF THE PROPERTIES OVER WHICH A WATERMAIN EASEMENT IS TO BE GRANTED BY THE NATIONAL CAPITAL COMMISSION (3,235 square metres).
 2. THE NATIONAL CAPITAL COMMISSION IS NOT RESPONSIBLE FOR THE ACCURACY OF THIS SKETCH.



SCHEDULE "K" - SKETCH OF THE PROPERTY OVER WHICH A SERVITUDE OF PASSAGE IS TO BE GRANTED BY THE NATIONAL CAPITAL COMMISSION (28 square metres)



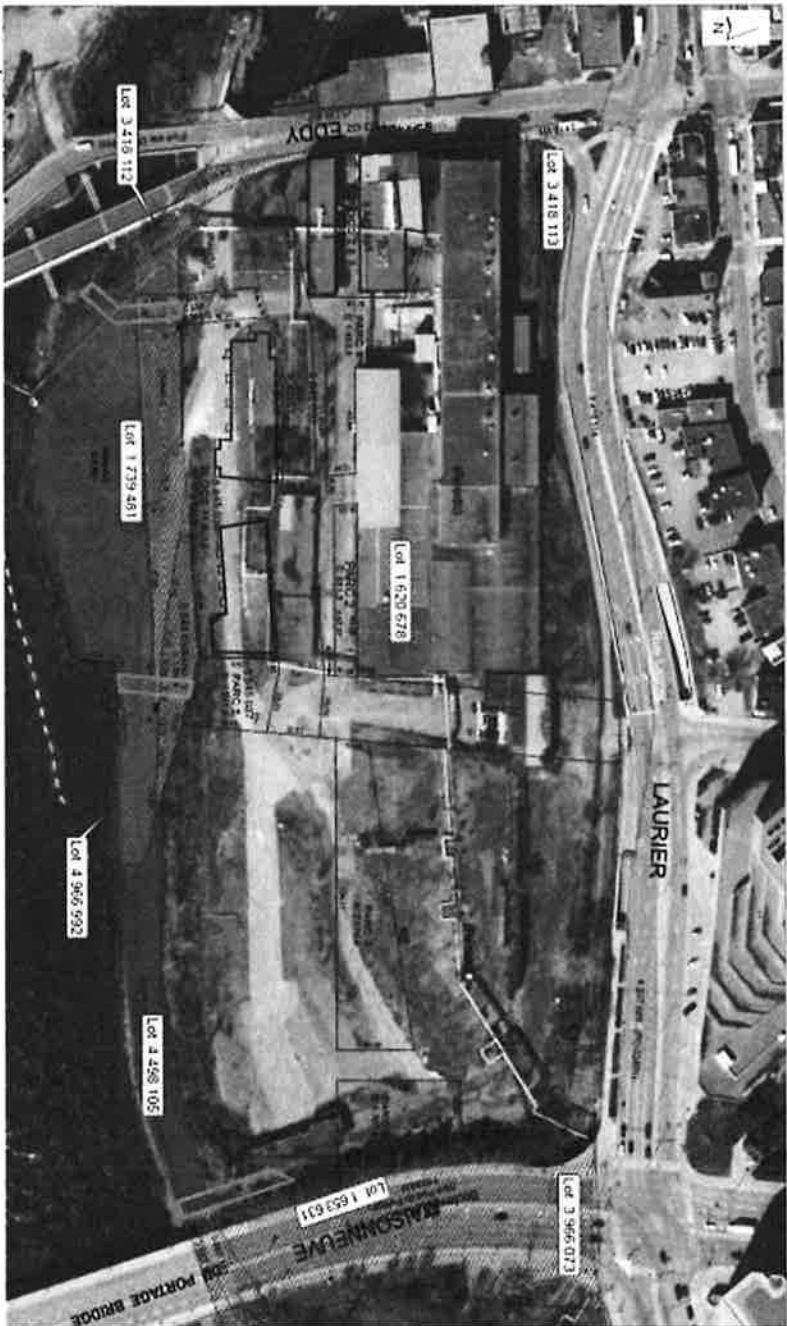
SCHEDULE "L" - SKETCH OF THE PROPERTY OVER WHICH A SERVITUDE OF DRAINAGE IS TO BE GRANTED BY THE NATIONAL CAPITAL COMMISSION (760 square metres)

SERVITUDE

Water drainage

SCHEDULE << M >>

-  NCC PROPERTY
-  FROM NCC TO WINDMILL
-  TO BE TAID BY NCC
-  FROM WINDMILL TO NCC
-  SERVITUDE (maximum 54 metres wide)








SCHEDULE "M" - SKETCH OF THE PROPERTIES OVER WHICH SERVITUDES OF PASSAGE ARE TO BE GRANTED TO THE NATIONAL CAPITAL COMMISSION (East and West of Chaudière Island) (1,800 square metres)



SCHEDULE "N" - SKETCH OF THE PROPERTIES OVER WHICH A SERVITUDE OF PASSAGE IS TO BE GRANTED TO THE NATIONAL CAPITAL COMMISSION (780 square metres)

EASEMENT PLAN

SCHEDULE << G >>

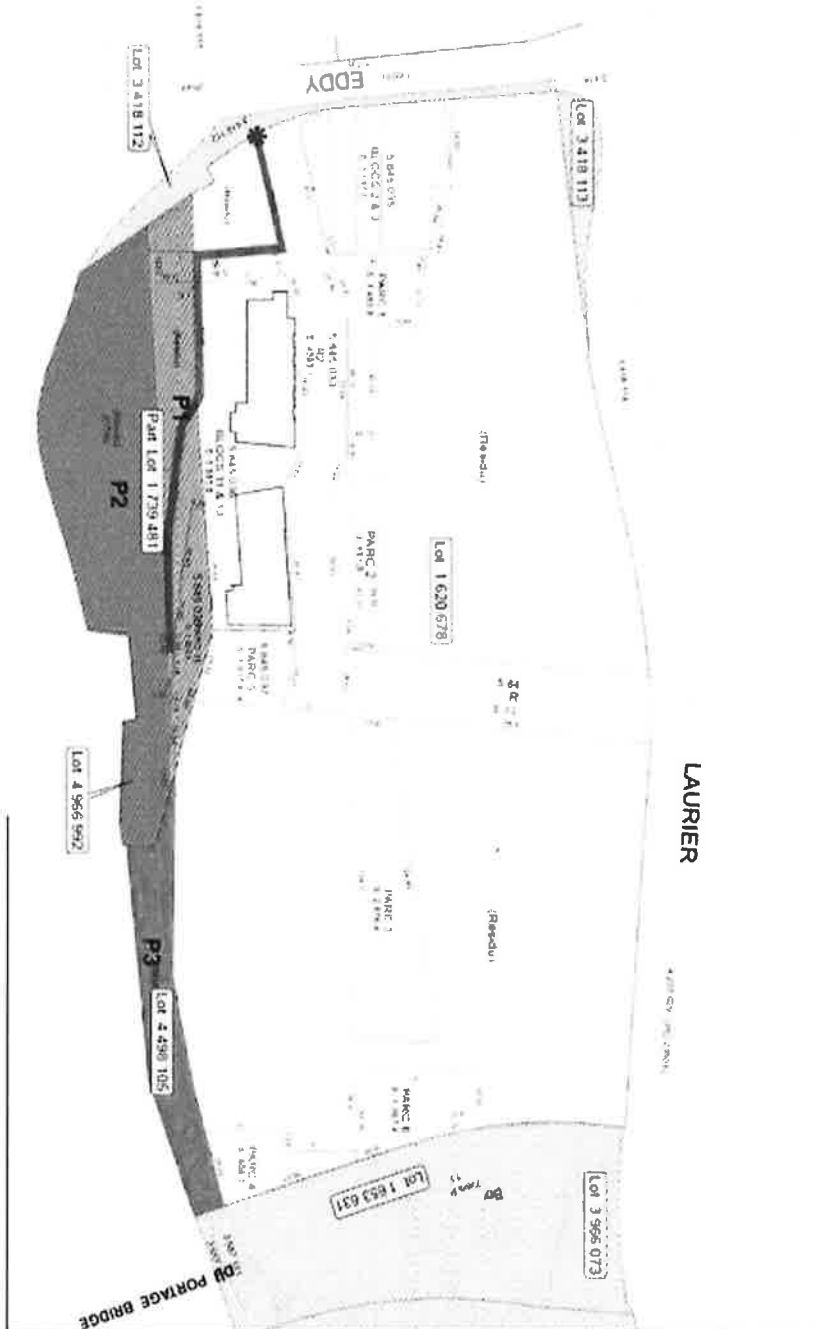
-  NOC PROPERTY
 -  FROM NOC TO WINDMILL
 -  TO RETAIN BY NOC
 -  FROM WINDMILL TO NOC
 -  UNIVERSAL ACCESSIBILITY
- Parts of Lot 1 620 678
Part of Lot 1 739 560 and
Part of Lot 1 739 481

P1
Part of Lot 1 739 481

P2
Part of Lot 1 739 481 and Lot 4 566 592

P3
Parts of Lot 1 620 678 and Lot 4 456 105







Universal accessibility must be granted from Eddy Street to P3 at all time
Universal access for path location subject to change



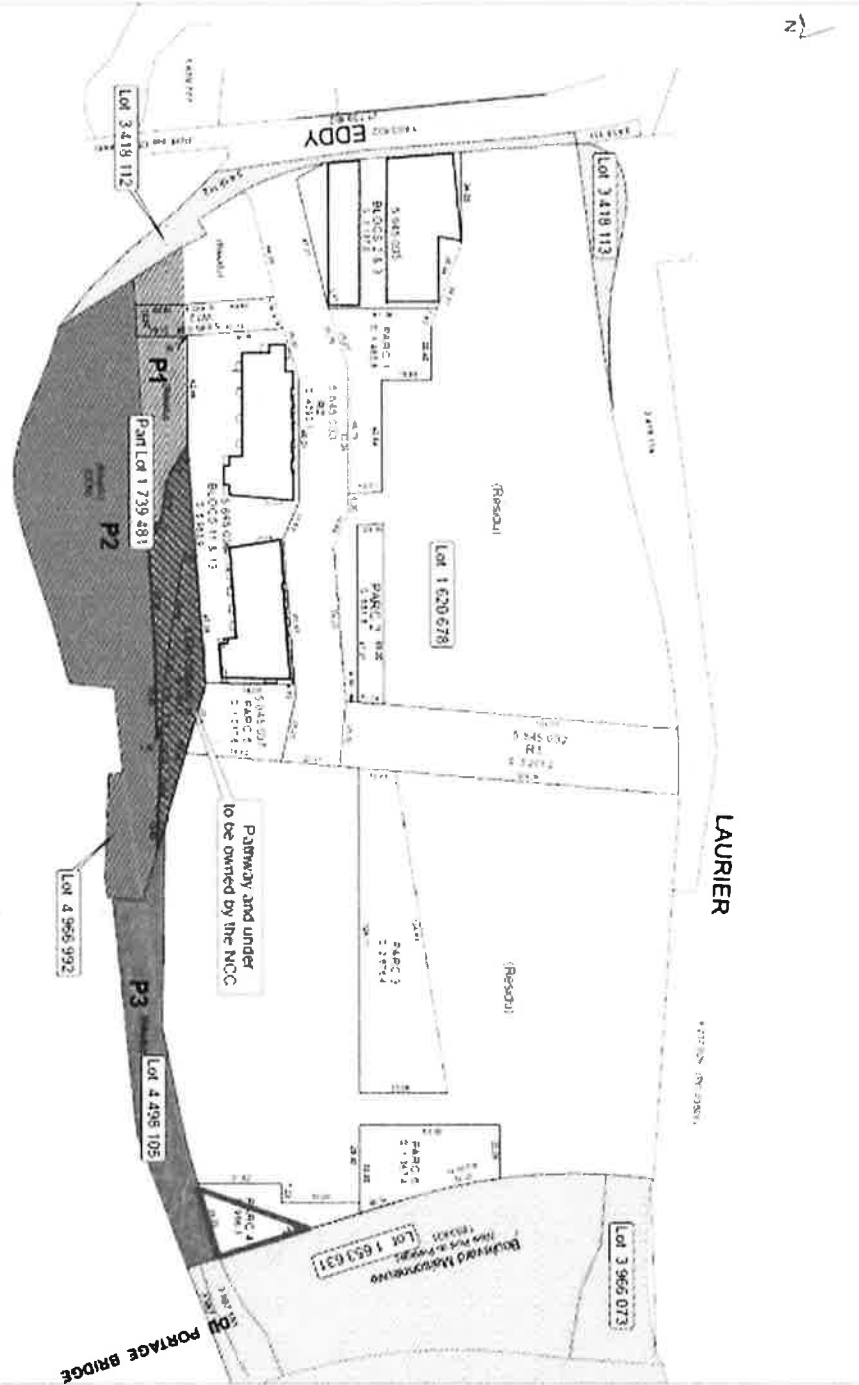
SCHEDULE "O" - SKETCH OF THE PROPERTY OVER WHICH A SERVITUDE OF PASSAGE IS TO BE GRANTED TO THE NATIONAL CAPITAL COMMISSION (Access to DuPortage Bridge) (400 square metres)

SERVITUDE OF PASSAGE

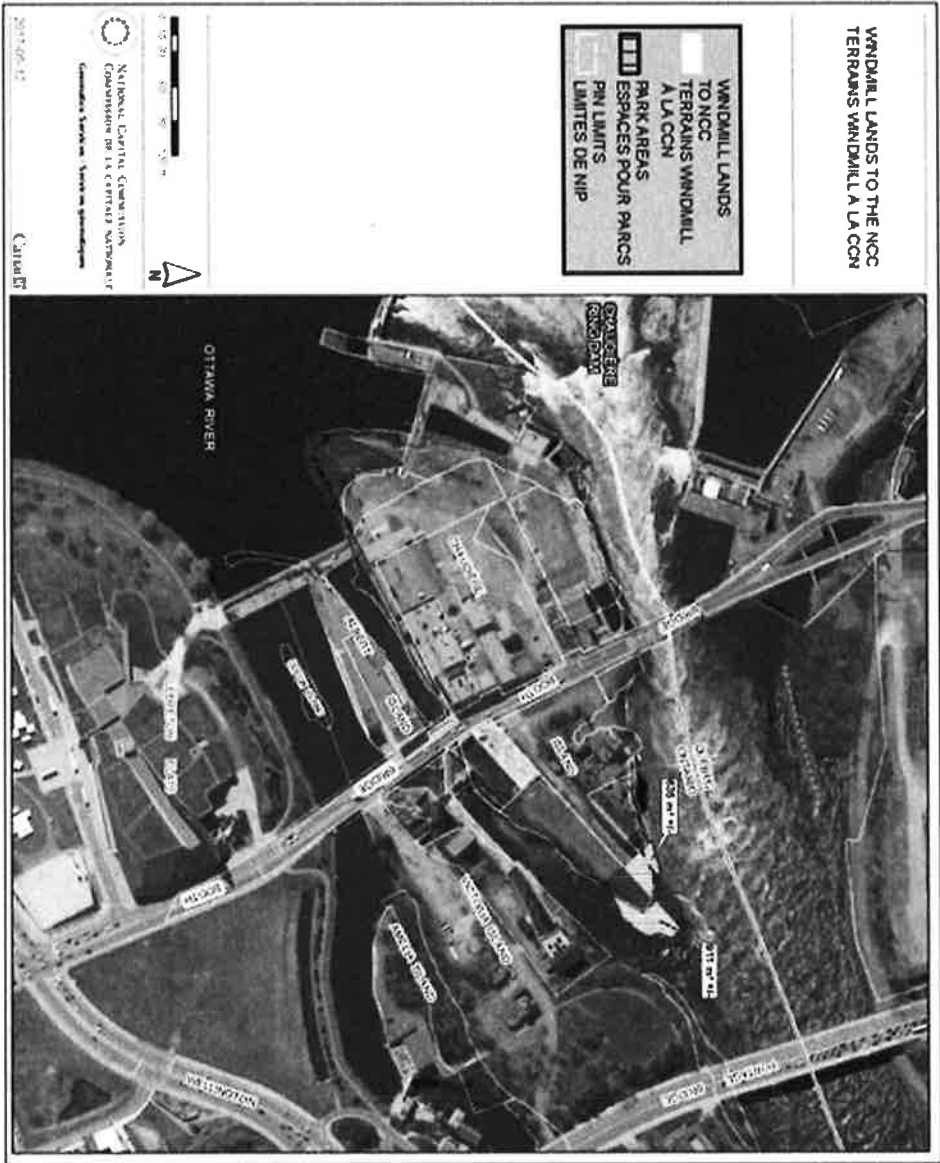
SCHEDULE << U >>

-  LAYAL PLAZA LOWER LEVEL
-  NCC PROPERTY
-  FROM NCC TO WINDMILL
-  TO RETAIN BY NCC
-  LANDS TO TRANSFER TO NCC
-  SERVITUDE OF PASSAGE

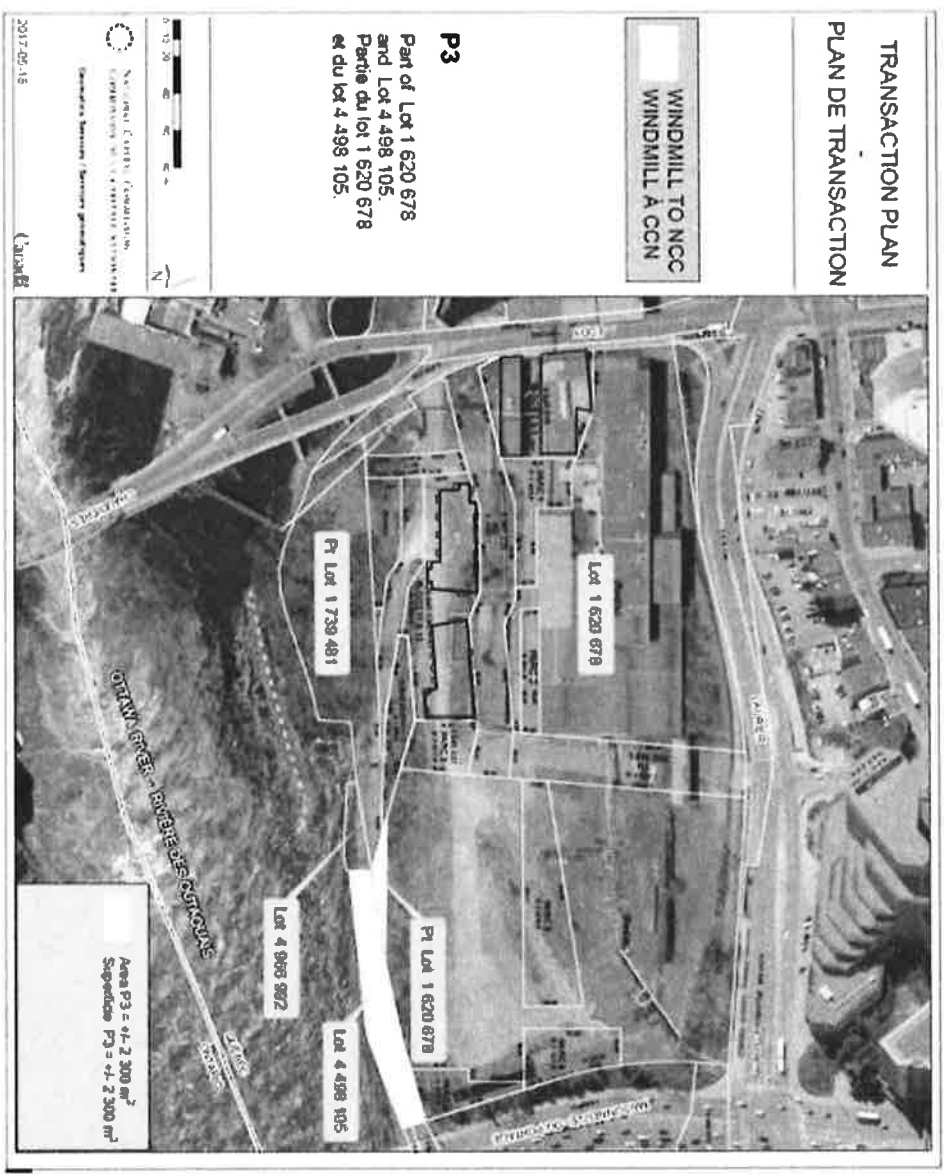
- P1**
Part of Lot 1 739 401
- P2**
Part of Lot 1 739 481 and Lot 4 866 992
- P3**
Parts of Lot 1 620 678 and Lot 4 498 105



**ANNEXE D – CROQUIS CARTOGRAPHIQUE DES BIENS IMMEUBLES DE WINDMILL DREAM ZIBI MASTER LP,
 AGISSANT PAR L'INTERMÉDIAIRE DE SON COMMANDITÉ, WINDMILL DREAM LIMITED PARTNERSHIP,
 AGISSANT PAR L'INTERMÉDIAIRE DE SON COMMANDITÉ, EB EDDY SUSTAINABLE REVITALIZATION INC.
 DEVANT ÊTRE ACQUIS PAR LA COMMISSION DE LA CAPITALE NATIONALE (1 546 m²)**



**ANNEXE E – CROQUIS CARTOGRAPHIQUE DES BIENS IMMEUBLES DE WINDMILL DREAM ZIBI MASTER LP,
 AGISSANT PAR L'INTERMÉDIAIRE DE SON COMMANDITÉ, WINDMILL DREAM LIMITED PARTNERSHIP,
 AGISSANT PAR L'INTERMÉDIAIRE DE SON COMMANDITÉ, EB EDDY SUSTAINABLE REVITALIZATION INC.
 DEVANT ÊTRE ACQUIS PAR LA COMMISSION DE LA CAPITALE NATIONALE (2 300 m²)**



**ANNEXE F – CROQUIS CARTOGRAPHIQUE DES BIENS IMMEUBLES DE WINDMILL DREAM ZIBI MASTER LP,
 AGISSANT PAR L'INTERMÉDIAIRE DE SON COMMANDITÉ, WINDMILL DREAM LIMITED PARTNERSHIP,
 AGISSANT PAR L'INTERMÉDIAIRE DE SON COMMANDITÉ, EB EDDY SUSTAINABLE REVITALIZATION
 INC. DEVANT ÊTRE ACQUIS PAR LA COMMISSION DE LA CAPITALE NATIONALE (880 m²)**



P1 : Pt Lot 1 739 481

WINDMILL TO NCC \ WINDMILL A CCN



NATIONAL CAPITAL COMMISSION
 COMMISSION DE LA CAPITALE NATIONALE
 Géomatics Services / Servicios Geomáticos

2017-09-14

Carte

Area P1 = +/- 880 m²
 Superficie P1 = +/- 880 m²

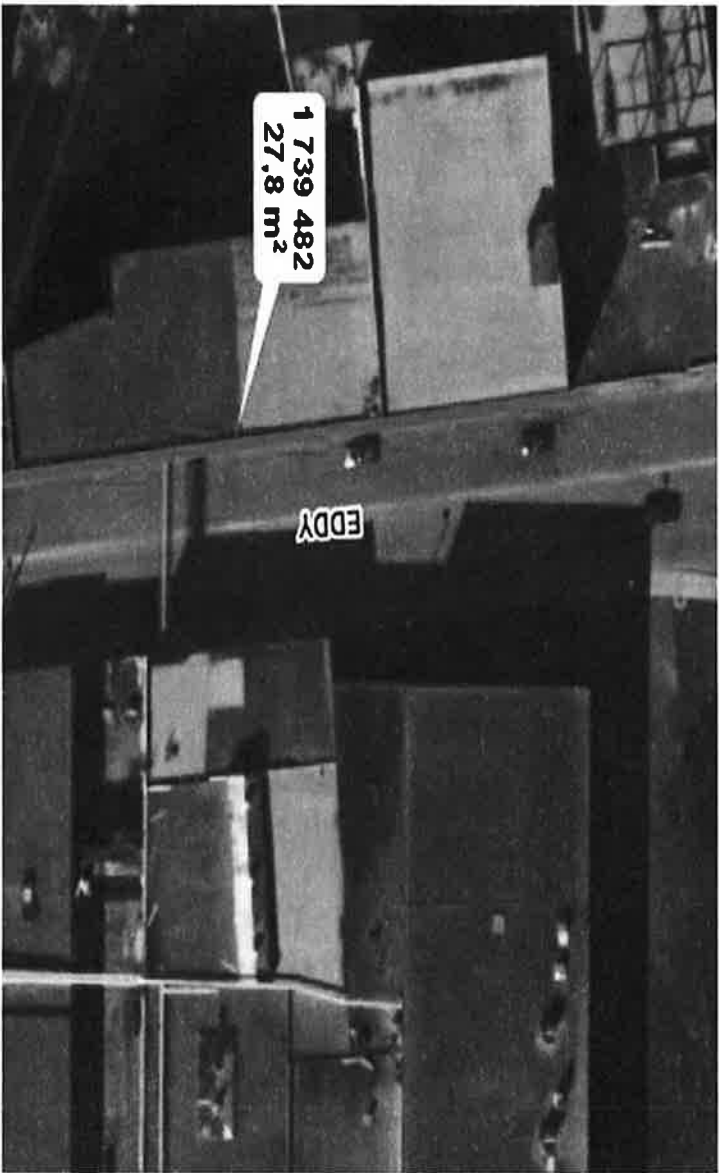
**ANNEXE G – CROQUIS CARTOGRAPHIQUE DES BIENS IMMEUBLES DE LA COMMISSION DE LA CAPITALE
 NATIONALE (les îles) DEVANT ÊTRE CÉDÉS À WINDMILL DREAM ZIBI MASTER LP, AGISSANT PAR
 L'INTERMÉDIAIRE DE SON COMMANDITÉ, WINDMILL DREAM LIMITED PARTNERSHIP, AGISSANT PAR
 L'INTERMÉDIAIRE DE SON COMMANDITÉ, EB EDDY SUSTAINABLE REVITALIZATION INC. (18 798 m²)**



**ANNEXE H – CROQUIS CARTOGRAPHIQUE DES BIENS IMMEUBLES DE LA COMMISSION DE LA CAPITALE
 NATIONALE (Gatineau) DEVANT ÊTRE CÉDÉS À WINDMILL DREAM ZIBI MASTER LP, AGISSANT PAR
 L'INTERMÉDIAIRE DE SON COMMANDITÉ, WINDMILL DREAM LIMITED PARTNERSHIP, AGISSANT PAR
 L'INTERMÉDIAIRE DE SON COMMANDITÉ, EB EDDY SUSTAINABLE REVITALIZATION INC. (3 400 m²)**



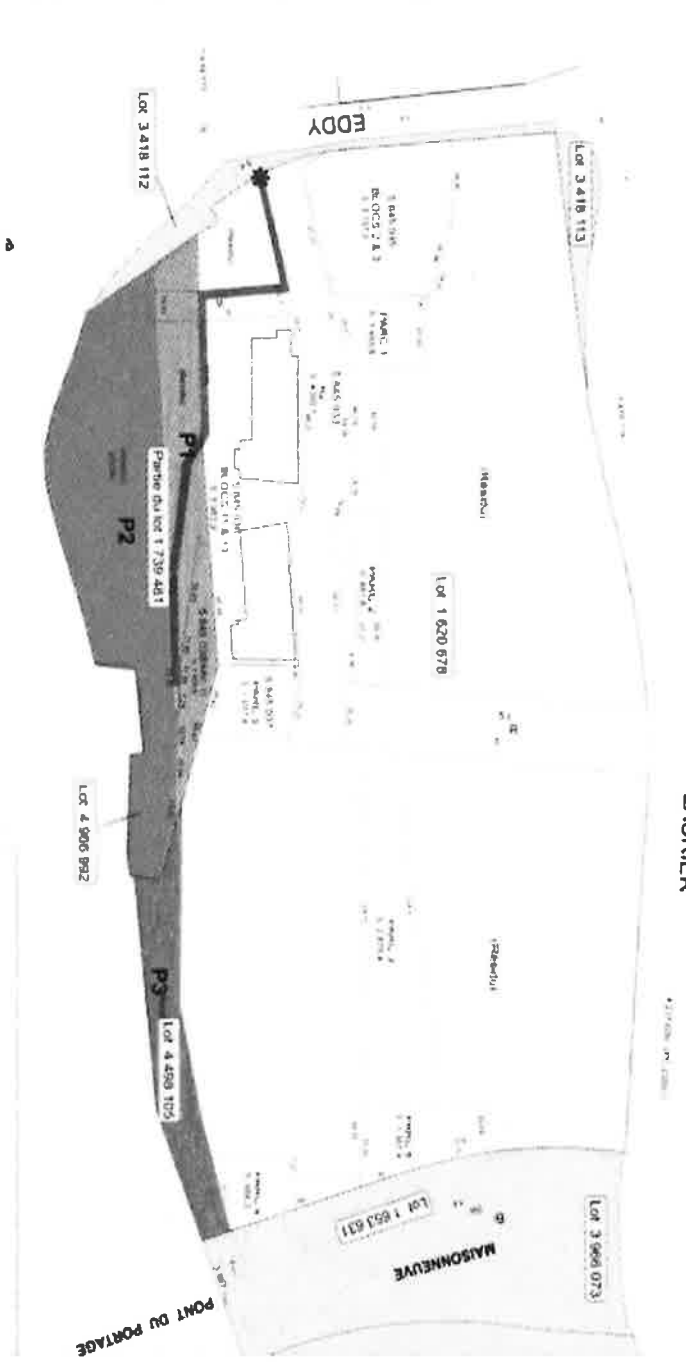
**ANNEXE K – CROQUIS CARTOGRAPHIQUE DU BIEN IMMEUBLE SUR DE LA COMMISSION DE LA CAPITALE
NATIONALE SUR LEQUEL ELLE DOIT OCTROYER UNE SERVITUDE DE PASSAGE (28 m²)**



ANNEXE N – CROQUIS CARTOGRAPHIQUE DES BIENS IMMEUBLES SUR LESQUELS UNE SERVITUDE DE PASSAGE DOIT ÊTRE OCTROYÉE À LA COMMISSION DE LA CAPITALE NATIONALE (780 m²)

SERVITUDE D'ACCÈS UNIVERSEL ANNEXE "G"

- PROPRIÉTÉ DE LA CCN
- DE LA NCC A WINDMILL
- A COUSSE RIVER PAR LA CCN
- DE WINDMILL A LA CCN
- ACCÈS UNIVERSEL
 - Partie du lot 1 620 678
 - Partie du lot 1 739 481 et
 - Partie du lot 1 739 481
- P1
 - Partie du lot 1 739 481
- P2
 - Partie des lots 1 739 481 et 4 986 892
- P3
 - Partie des lots 1 620 678 et 4 496 105
- *
 - L'accès universel doit être concédé de la rue Eddy à P3 en tout temps.
 - La localisation du service universel de 4 mètres de largeur est sujette à changement.



ANNEXE O – CROQUIS CARTOGRAPHIQUE DU BIEN IMMEUBLE SUR LEQUEL UNE SERVITUDE DE PASSAGE (accès au pont du Portage) DOIT ÊTRE OCTROYÉE À LA COMMISSION DE LA CAPITALE NATIONALE (400 m²)

SERVITUDE DE PASSAGE

ANNEXE " U "

